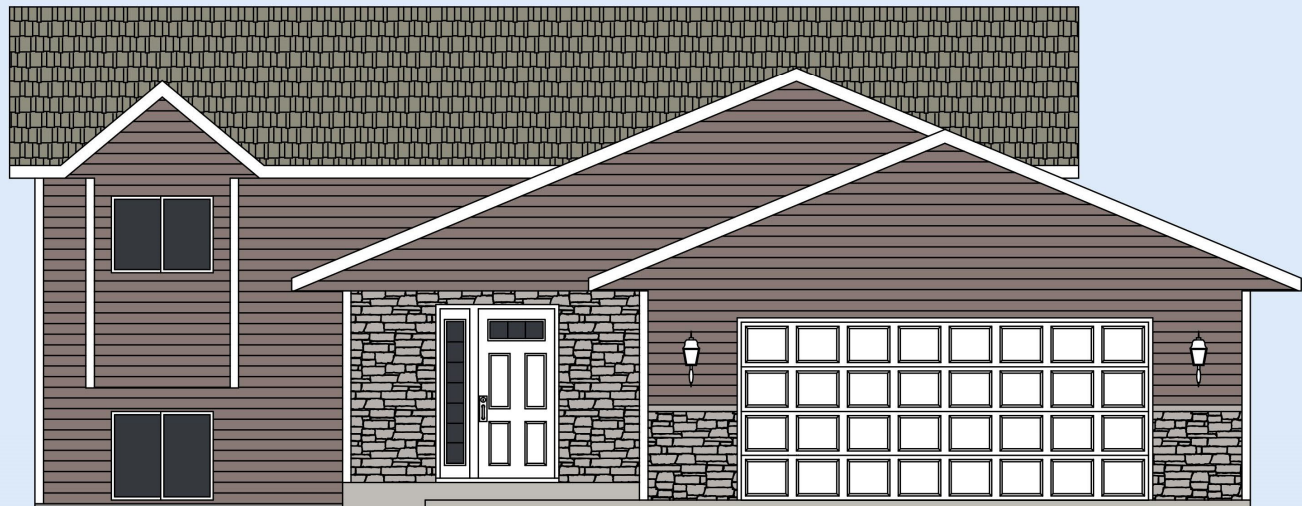


2228 Eleanor Street, Worthington, MN



Newly constructed 2224 sq. ft. split-level, 4 bedroom, 2 bath home is located in Worthington's attractive Morning View Second Addition.

Amenities:

- 2 stall garage with opener
- Open concept with large family room
- Finished basement
- Passive radon system
- Stove & refrigerator
- Dishwasher & Microwave
- Durable low maintenance siding
- Efficient natural gas furnace & central air conditioning
- Landscaping



MORNING VIEW SECOND ADDITION

Block 2, Lot 2

2228 Eleanor Street

Worthington MN 56287

Sale Price
\$307,299*

***Income Restrictions
Apply**

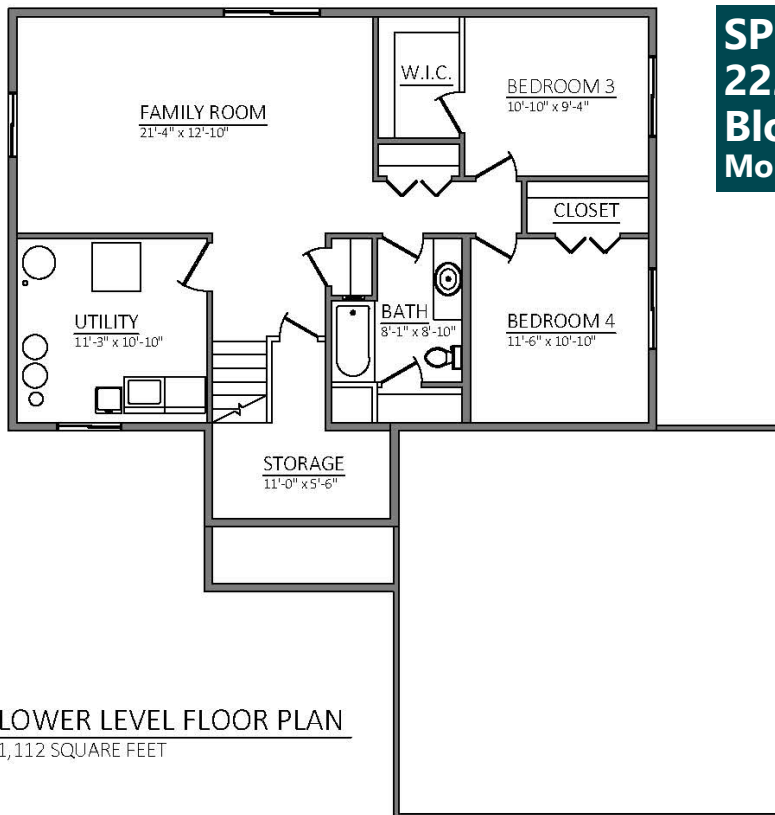
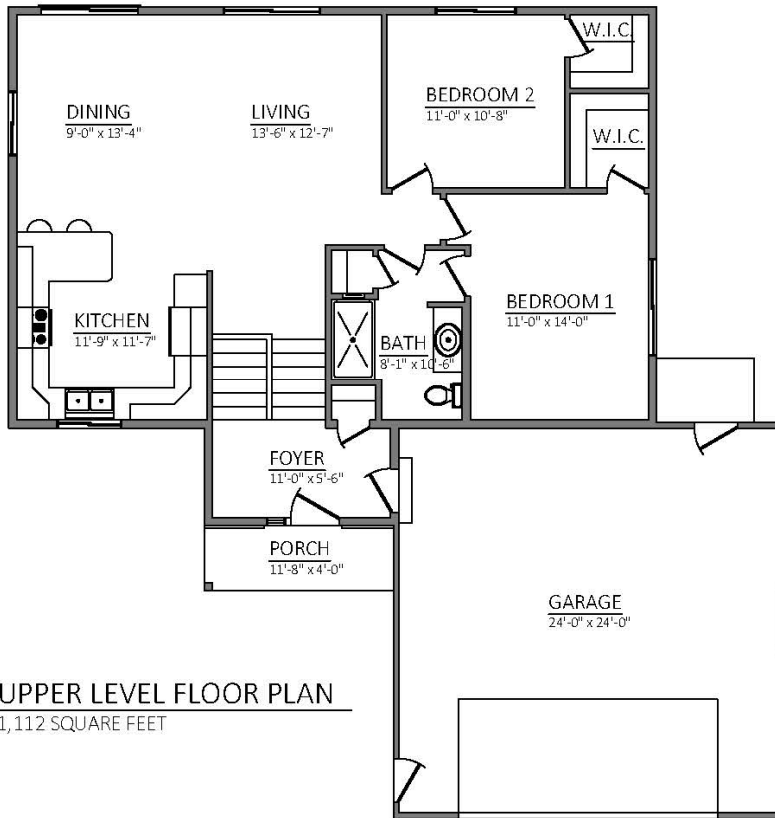
Non-restricted Price
\$332,000

*Find out if you may be
eligible!*

SOUTHWEST MINNESOTA

Housing Partnership

Contact Pam Schreier at 507.836.1623 • pams@swmhp.org



SPLIT-LEVEL
2228 Eleanor Street
Block 2, Lot 2
Morning View Second Addition