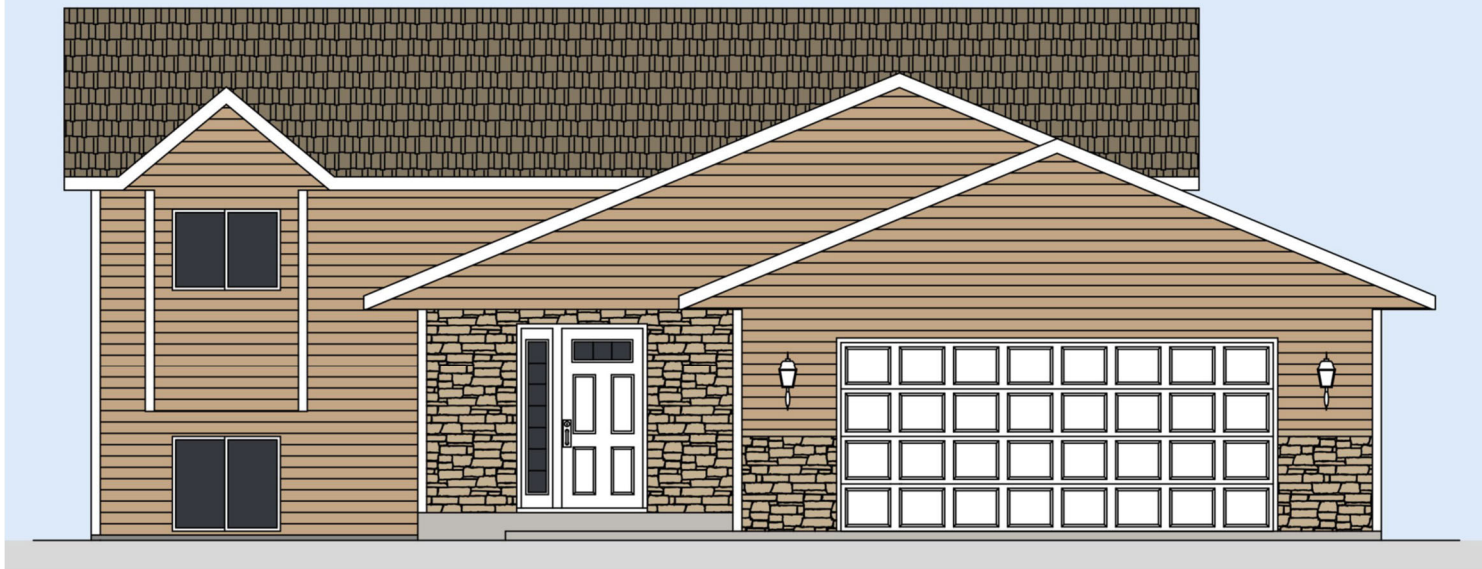


2218 Eleanor Street, Worthington, MN



Newly constructed 2224 sq. ft. split-level, 4 bedroom, 2 bath home is located in Worthington's attractive Morning View Second Addition.

Amenities:

- 2 stall garage with opener
- Open concept with large family room
- Finished basement
- Passive radon system
- Stove & refrigerator
- Dishwasher & Microwave
- Durable low maintenance siding
- Efficient natural gas furnace & central air conditioning
- Landscaping



MORNING VIEW SECOND ADDITION

Block 2, Lot 1

2218 Eleanor Street

Worthington MN 56287

Sale Price
\$307,299*

***Income Restrictions
Apply**

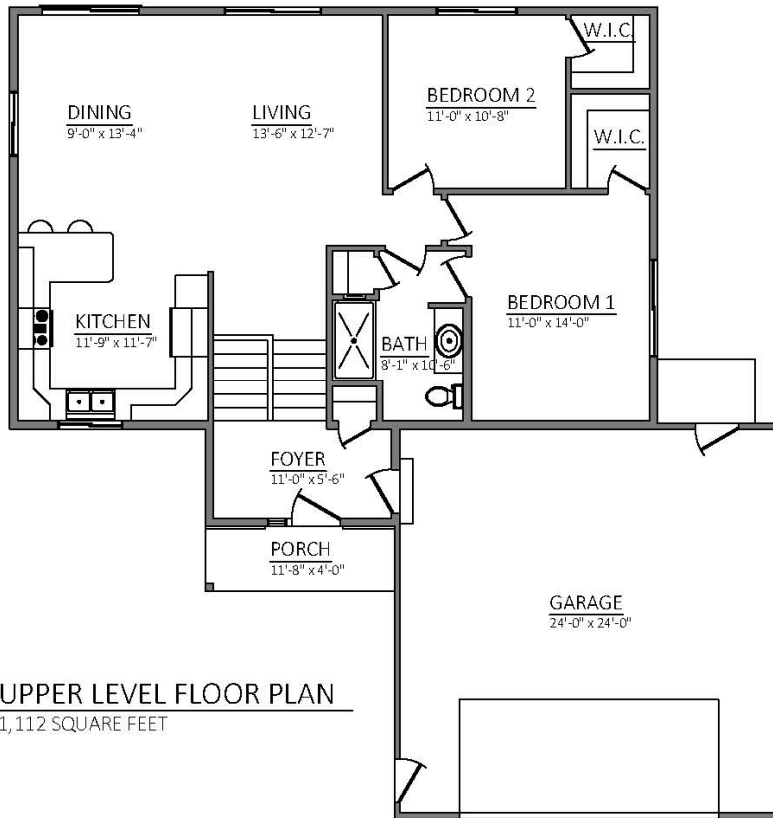
Non-restricted Price
\$332,000

*Find out if you may be
eligible!*

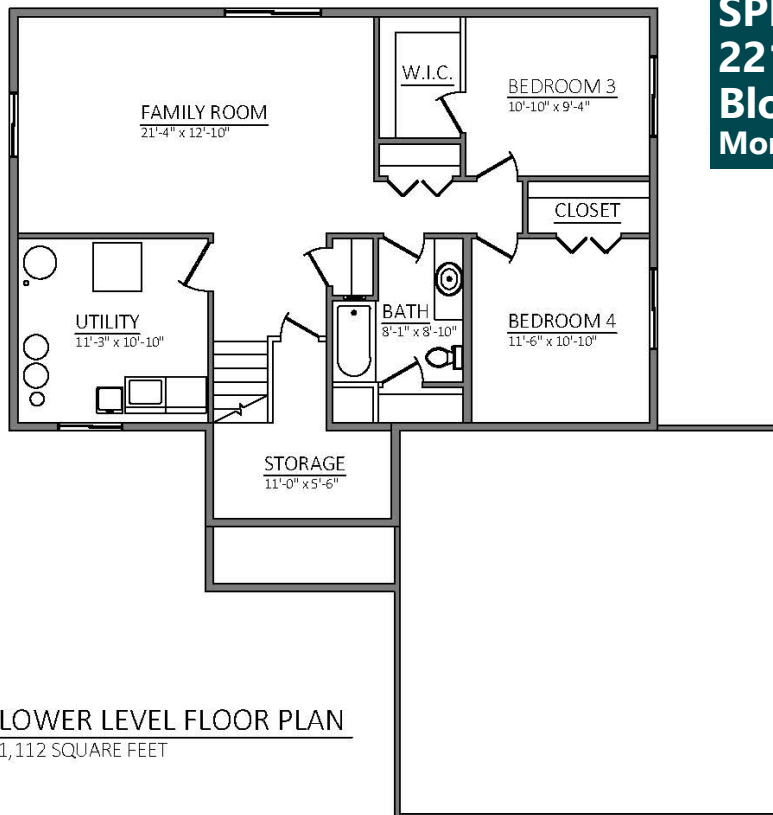
SOUTHWEST MINNESOTA

Housing Partnership

Contact Pam Schreier at 507.836.1623 • pams@swmhp.org



UPPER LEVEL FLOOR PLAN
1,112 SQUARE FEET



LOWER LEVEL FLOOR PLAN
1,112 SQUARE FEET

SPLIT-LEVEL
2218 Eleanor Street
Block 2, Lot 1
Morning View Second Addition