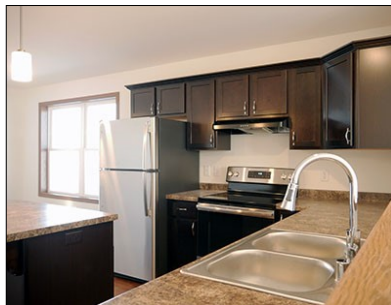


2006 Essler Drive, St. Peter, MN



Newly constructed split-level, 2 bedroom, 1 bath home located in Saint Peter's newest neighborhood, *Traverse Green*.

Features and Amenities:

- Year Built: 2017
- Finished square feet: 1,064
- Unfinished basement for future expansion
- Lot size: 6,900 square feet
- 2-stall attached garage
- Front Porch (6'-4" x 10')
- Passive radon system
- Durable low maintenance siding
- Efficient natural gas furnace & central air conditioning
- Stove & refrigerator included
- County: Nicollet
- School District: St. Peter (ISD 508)

SOUTHWEST MINNESOTA

Housing Partnership

Contact Ali at (507) 836-1605 • alij@swmhp.org

TRAVERSE GREEN SUBDIVISION

Block 3, Lot 11

2006 Essler Drive

Saint Peter MN 56082

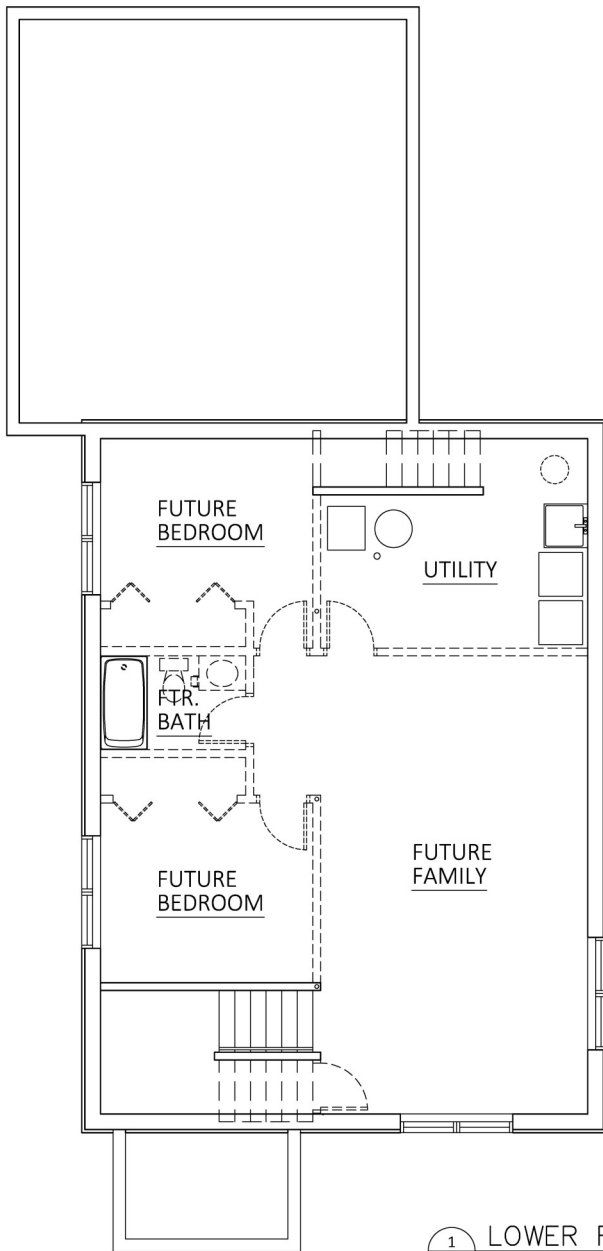
Sale Price
\$200,200*

**Income Restrictions Apply*

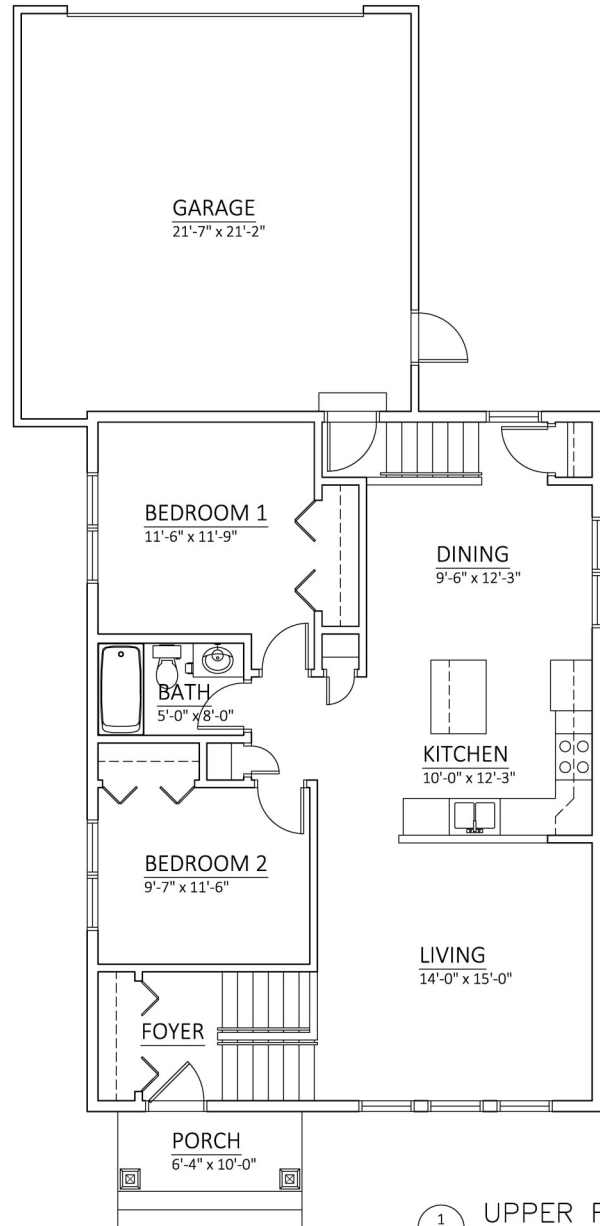
Non-restricted Price
\$209,700

Find out if you may be eligible!





1
A1 LOWER FLOOR
1,064 SQUARE FEET



1
A2 UPPER FLOOR
1,064 SQUARE FEET

SLPIT-LEVEL
2006 Essler Drive
Block 3, Lot 11
Traverse Green Subdivision