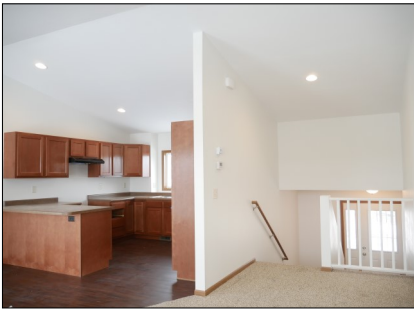


2251 Eleanor Street, Worthington, MN



Newly constructed split-level 244 sq. ft. home is located in Worthington's Morning View Second Addition.

Amenities:

- 4 Bedroom
- 2 Bath
- 2 stall garage with opener
- Open concept with large family room
- Finished basement
- Passive radon system
- Stove & refrigerator
- Durable low maintenance siding
- Efficient natural gas furnace & central air conditioning
- Landscaping

*Reduced pricing and special financing to qualified households.

SOUTHWEST MINNESOTA

Housing Partnership Contact Ali Joens at 507.836.1623 • alij@swmhp.org

MORNING VIEW SECOND ADDITION

Block 1, Lot 5

2251 Eleanor Street

Worthington MN 56287

Sale Price

\$195,799*

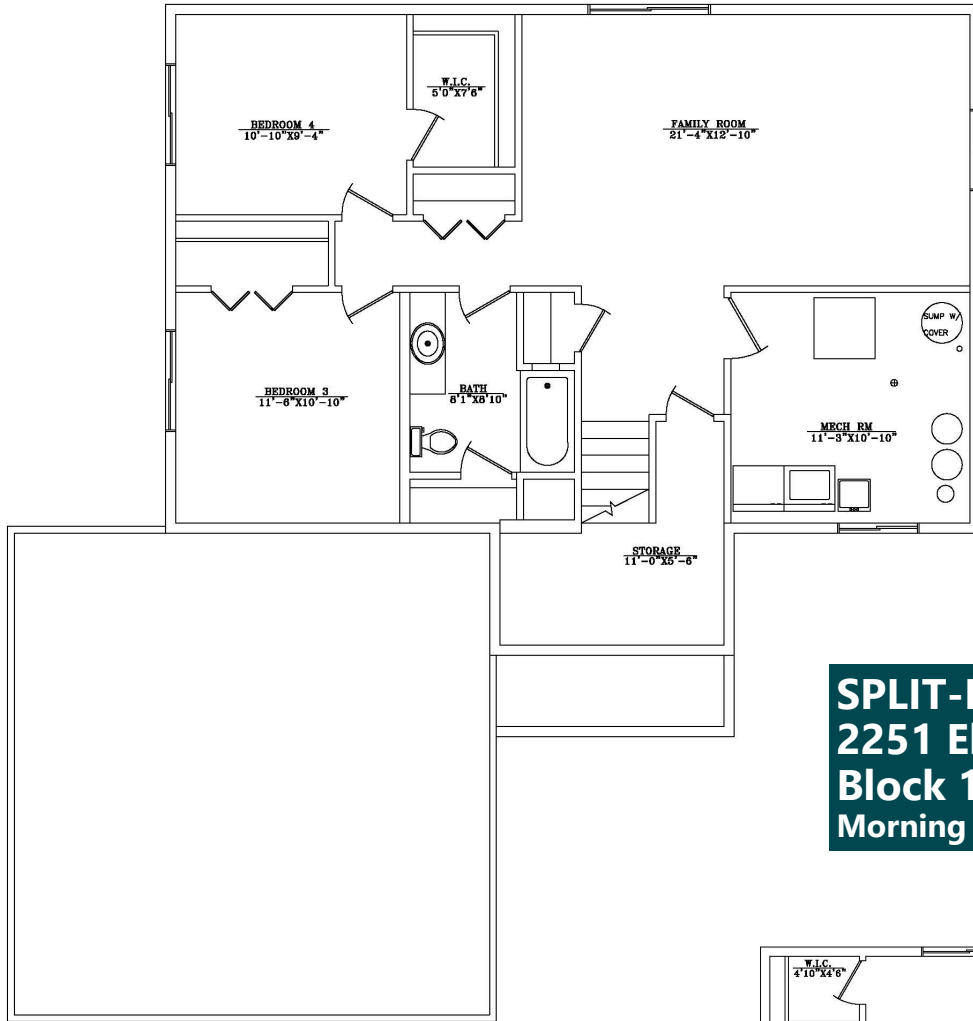
**Income Restrictions Apply*

Non-restricted Price

\$220,500

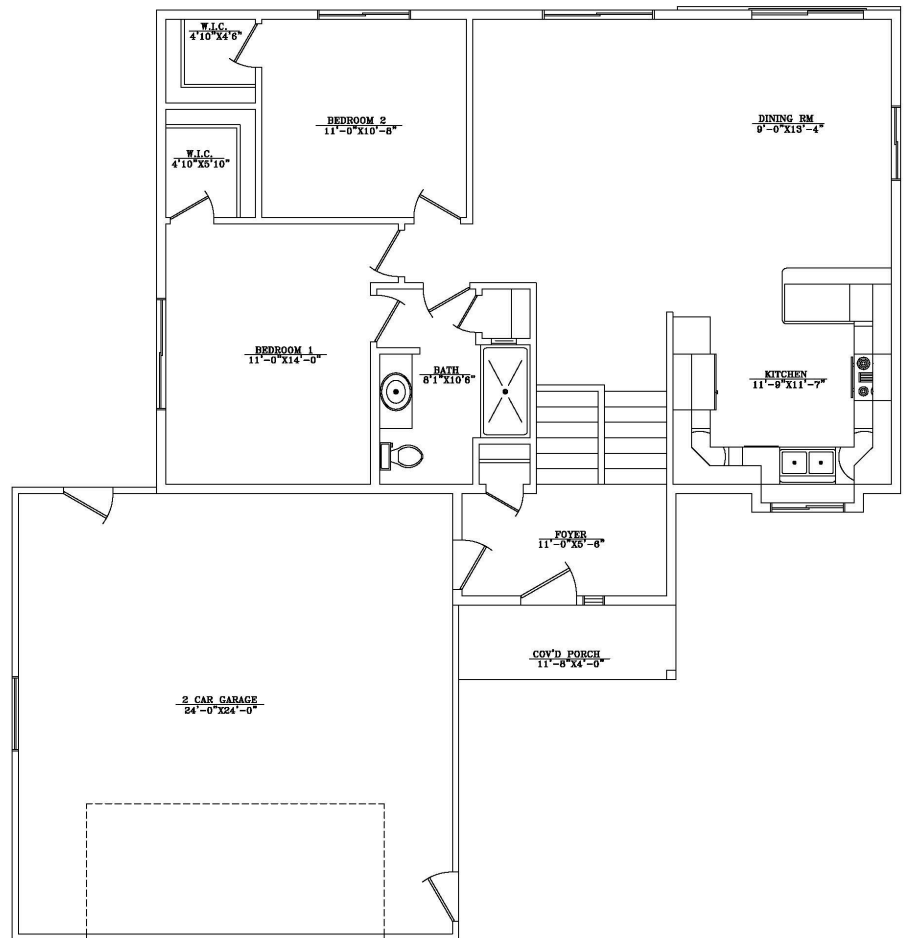
Find out if you may be eligible!





LOWER LEVEL FLOOR
1,111 SQUARE FEET

SPLIT-LEVEL
2251 Eleanor Street
Block 1, Lot 5
Morning View Second Addition



UPPER LEVEL FLOOR PLAN
1,111 SQUARE FEET