

# 2237 Eleanor Street, Worthington, MN



Newly constructed split-level, 4 bedroom, 2 bath home located in Worthington's Morning View Second Addition.

#### Amenities:

- 2 stall garage with opener
- Open concept with large family room
- Finished basement
- Passive radon system
- Stove & refrigerator
- Durable low maintenance siding
- Efficient natural gas furnace & central air conditioning
- Landscaping

\*Reduced pricing and special financing to qualified households.



## MORNING VIEW SECOND ADDITION

Block 1, Lot 3

2237 Eleanor Street

Worthington MN 56287

**Sale Price**  
**\$195,799\***

*\*Income Restrictions Apply*

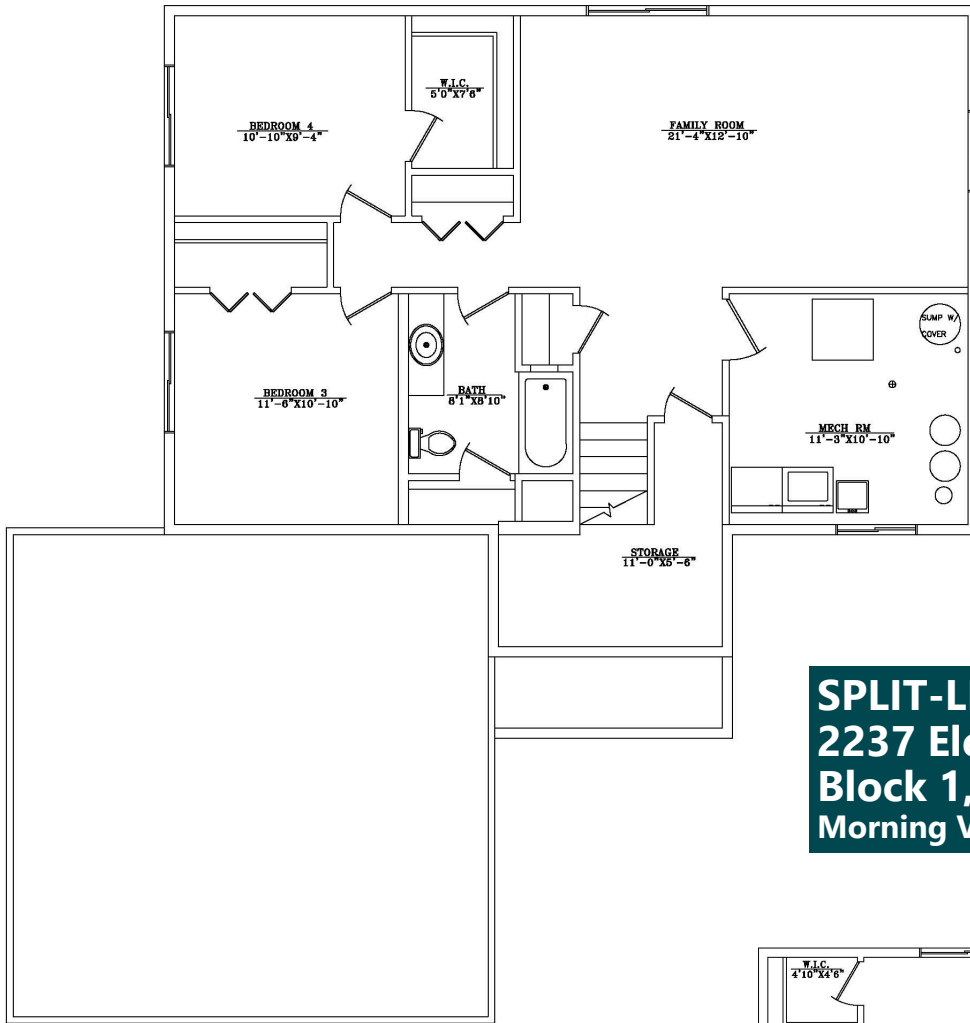
**Non-restricted Price**  
**\$220,500**

*Find out if you may be eligible!*

SOUTHWEST MINNESOTA

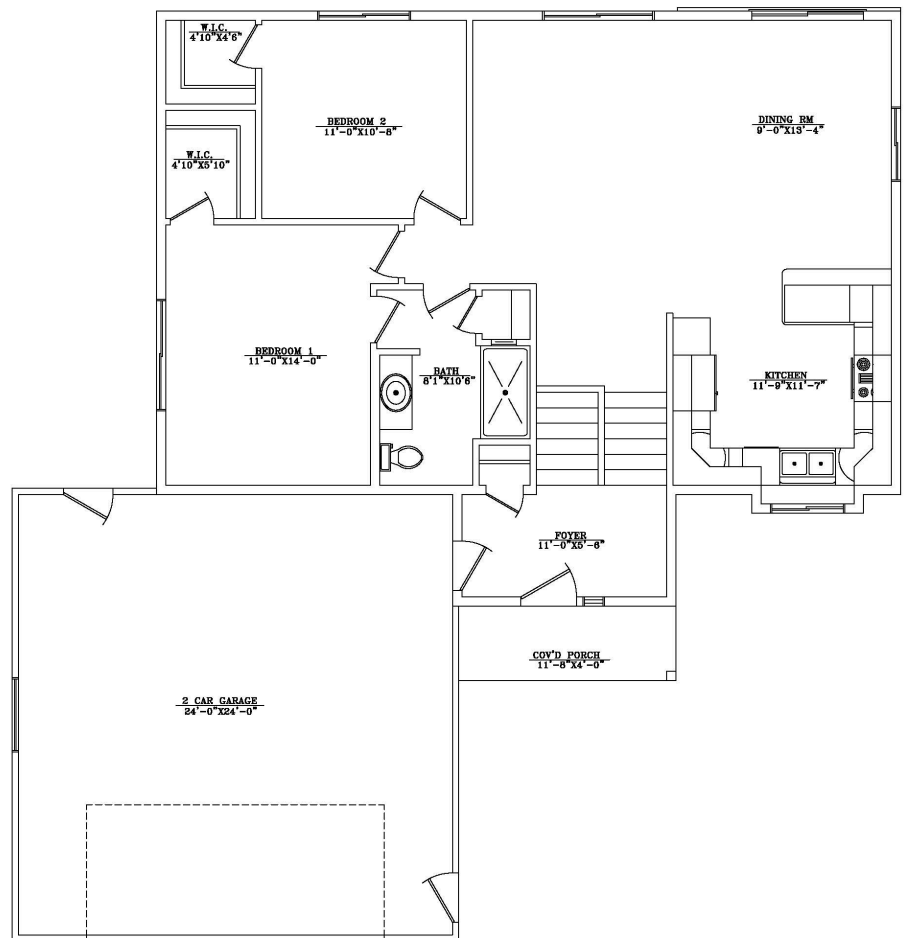
**Housing Partnership**

Contact Pam at 507.836.1605 • [alij@swmhp.org](mailto:alij@swmhp.org)



**SPLIT-LEVEL**  
**2237 Eleanor Street**  
**Block 1, Lot 3**  
**Morning View Second Addition**

**LOWER LEVEL FLOOR**  
 1,111 SQUARE FEET



**UPPER LEVEL FLOOR PLAN**  
 1,111 SQUARE FEET