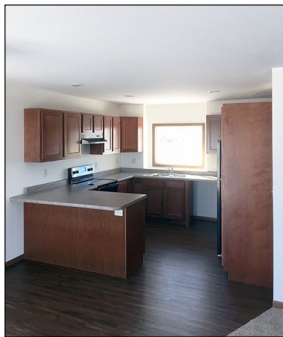


2237 Eleanor Street, Worthington, MN



Newly constructed 2,224 sq. ft. split-level, 4 bedroom, 2 bath home located in Worthington's Morning View Second Addition.

Amenities:

- 2 stall garage with opener
- Open concept with large family room
- Finished basement
- Passive radon system
- Stove & refrigerator
- Durable low maintenance siding
- Efficient natural gas furnace & central air conditioning
- Landscaping

*Reduced pricing and special financing to qualified households.



MORNING VIEW SECOND ADDITION

Block 1, Lot 3

2237 Eleanor Street

Worthington MN 56287

Sale Price
\$195,799*

**Income Restrictions Apply*

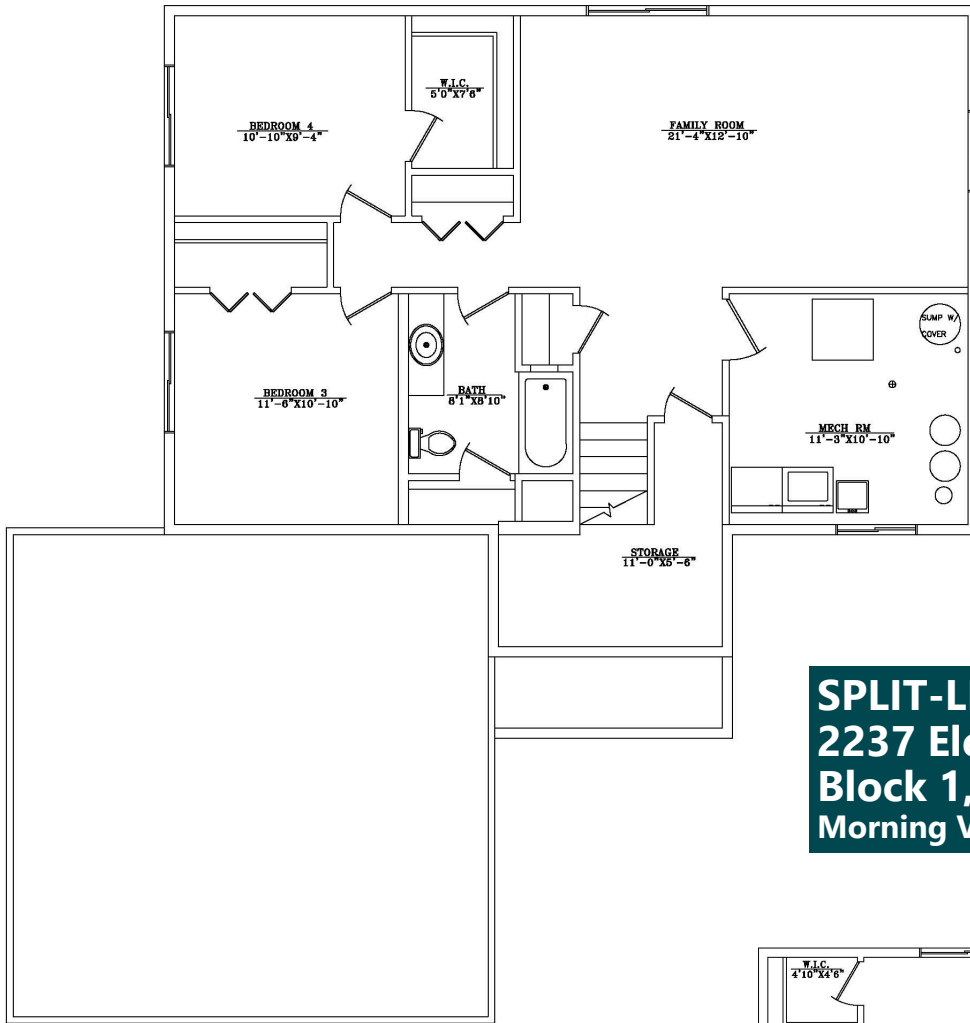
Non-restricted Price
\$220,500

Find out if you may be eligible!

SOUTHWEST MINNESOTA

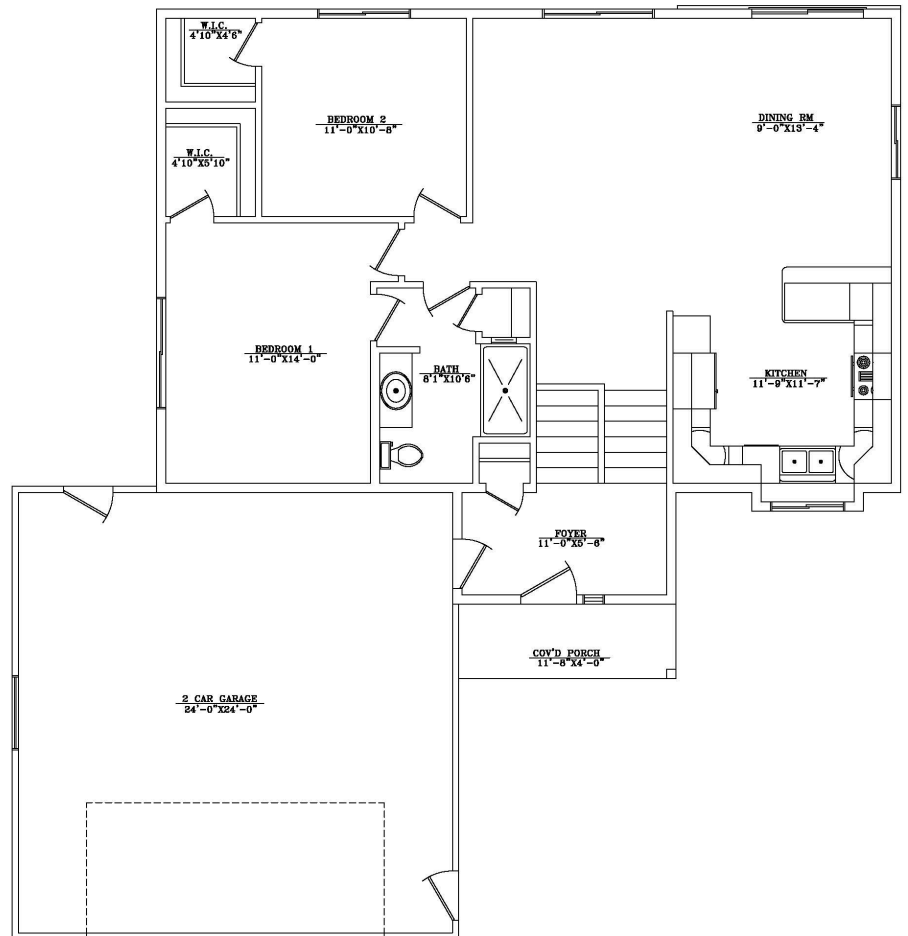
Housing Partnership

Contact Ali at 507.836.1605 • alij@swmhp.org



LOWER LEVEL FLOOR
1,111 SQUARE FEET

SPLIT-LEVEL
2237 Eleanor Street
Block 1, Lot 3
Morning View Second Addition



UPPER LEVEL FLOOR PLAN
1,111 SQUARE FEET