

2217 Eleanor Street, Worthington, MN



Newly constructed split-level 2224 sq. ft. home is located in Worthington's Morning View Second Addition.

Amenities:

- 4 Bedrooms
- 2 Bath
- 2 stall garage with opener
- Open concept with large family room
- Finished basement
- Passive radon system
- Stove & refrigerator
- Durable low maintenance siding
- Efficient natural gas furnace & central air conditioning
- Landscaping
-

*Reduced pricing and special financing to qualified households.

SOUTHWEST MINNESOTA

Housing Partnership

Contact Ali at 507.836.1605 • alij@swmhp.org



MORNING VIEW SECOND ADDITION

Block 1, Lot 1

2217 Eleanor Street

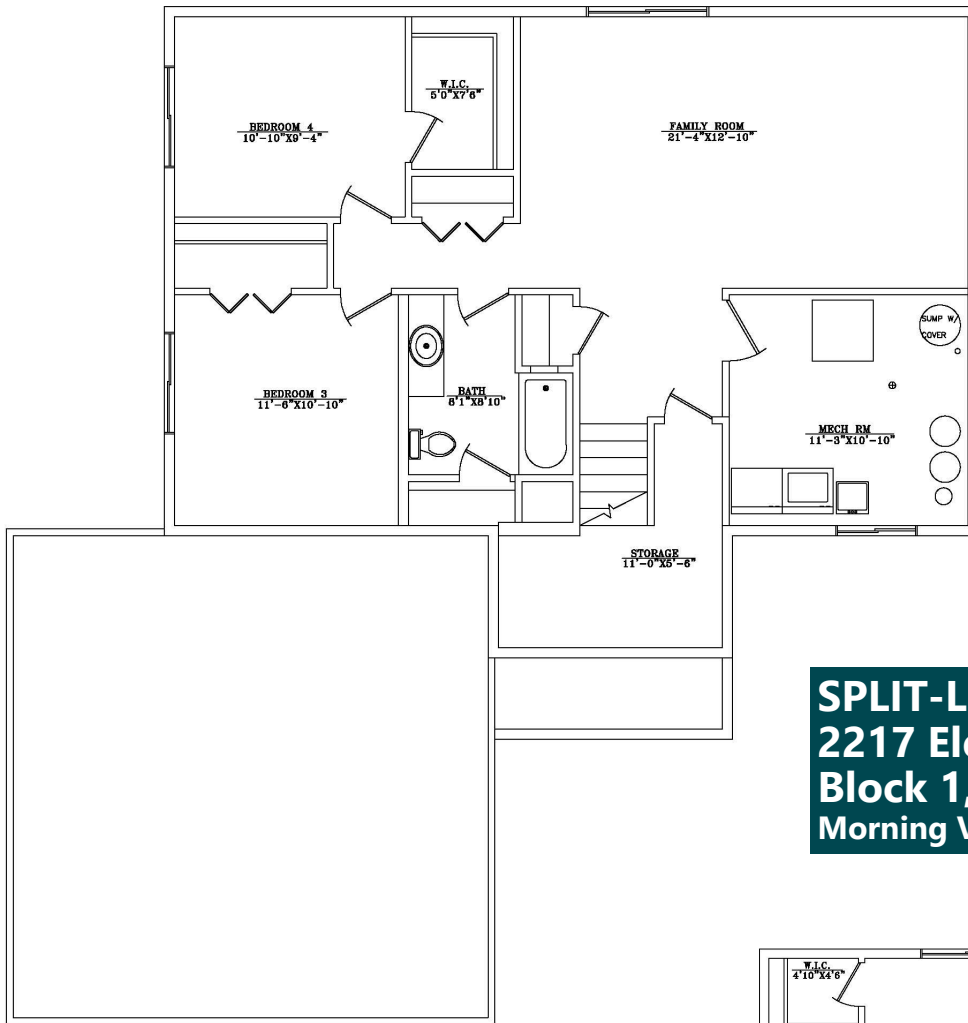
Worthington MN 56287

Sale Price
\$195,799*

*Income Restrictions Apply

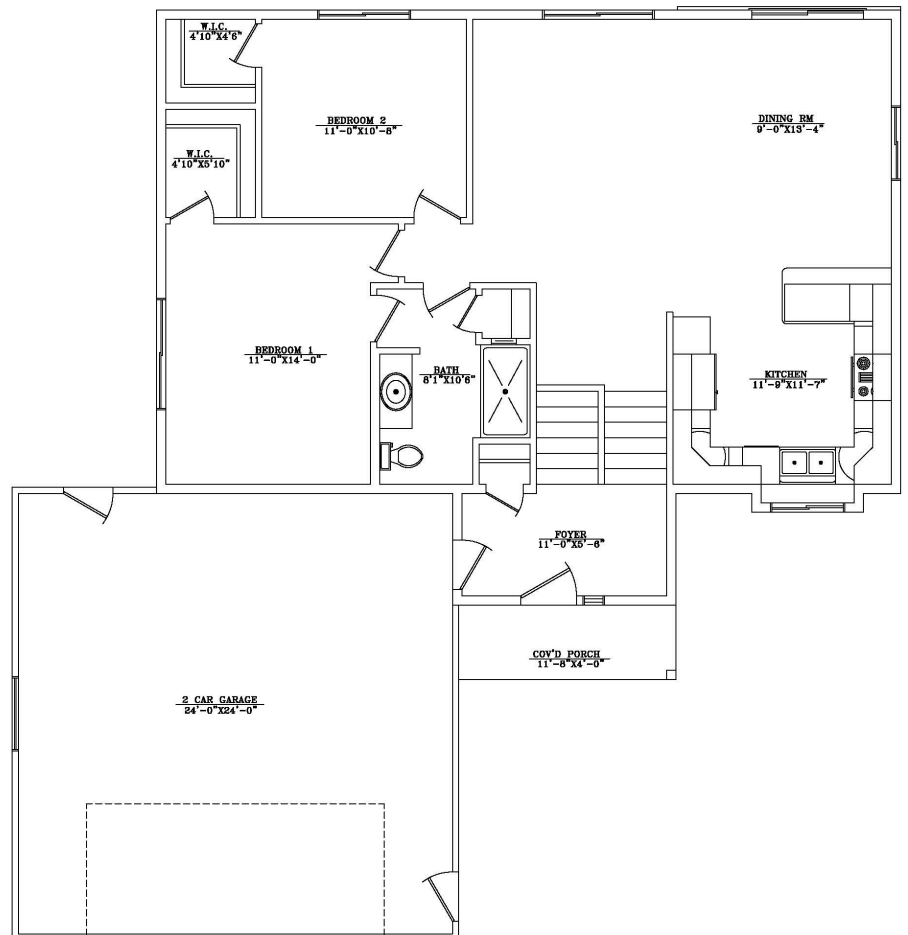
Non-restricted Price
\$220,500

Find out if you may be eligible!



SPLIT-LEVEL
2217 Eleanor Street
Block 1, Lot 1
Morning View Second Addition

LOWER LEVEL FLOOR
 1,111 SQUARE FEET



UPPER LEVEL FLOOR PLAN
 1,111 SQUARE FEET