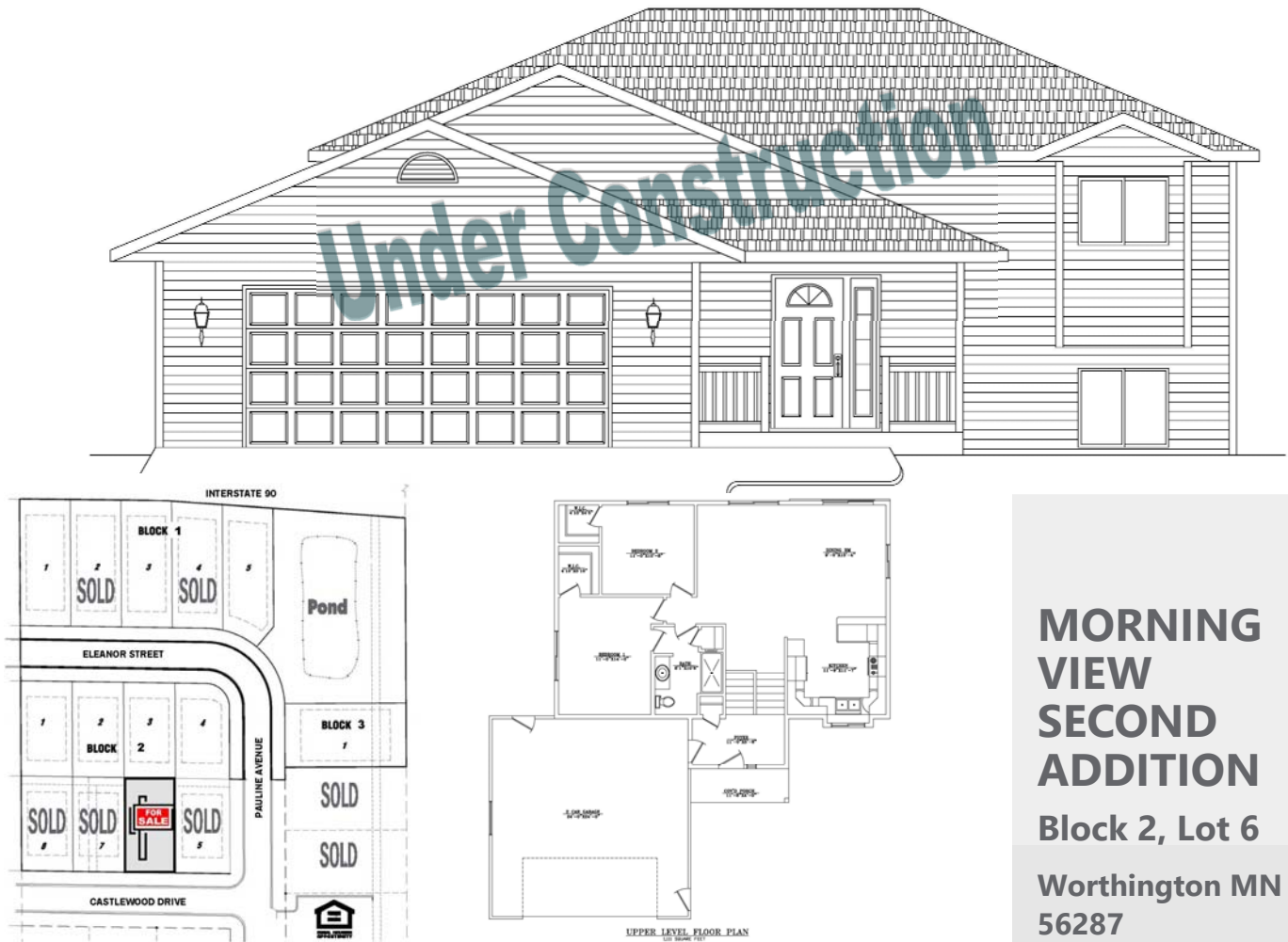


# 2235 Castlewood Drive, Worthington, MN



## MORNING VIEW SECOND ADDITION

Block 2, Lot 6

Worthington MN  
56287

**Sale Price**  
**\$201,836\***

**\*Income Restrictions Apply**

**Non-restricted Price**  
**\$220,500**

**4 Bedrooms**

**2 Bath**

**2224 sq. ft.**

Newly constructed split-level, 4 bedroom, 2 bath home located in Worthington's Morning View Second Addition.

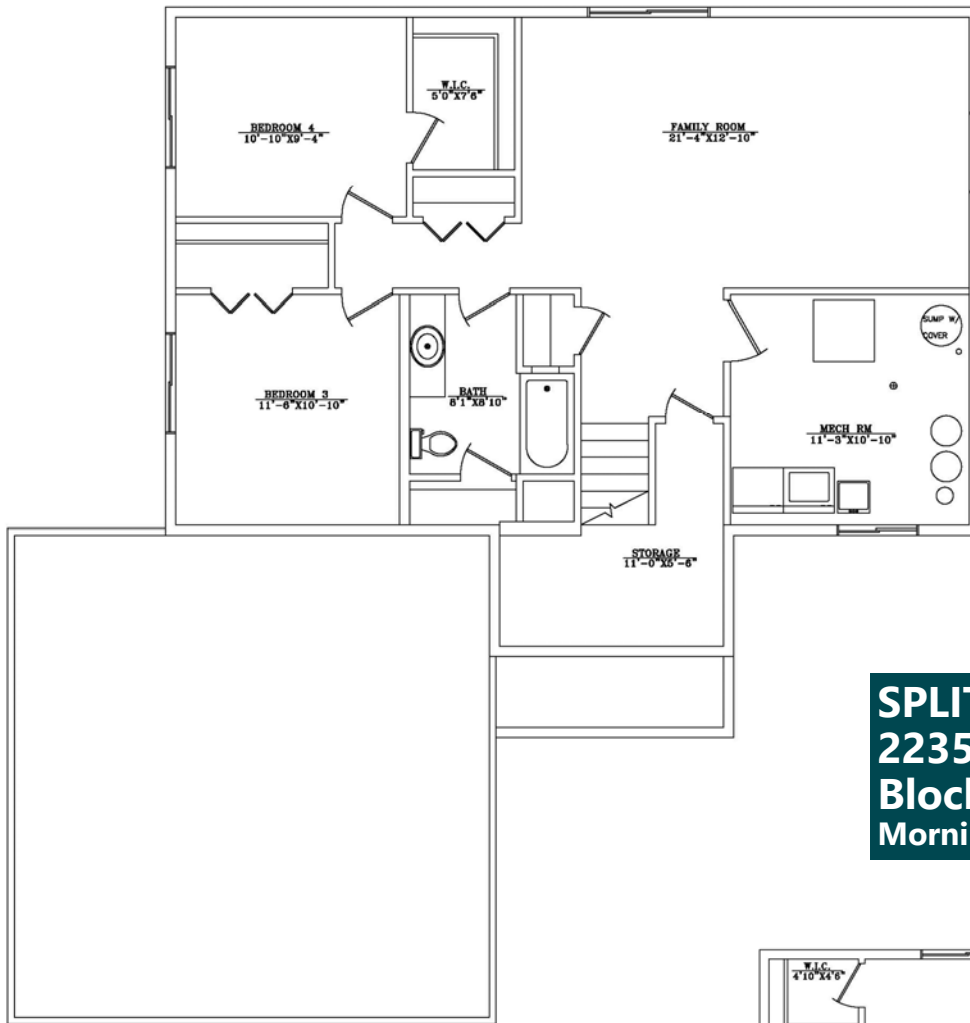
### Amenities:

- 2 stall garage with opener
- Open concept with large family room
- Finished basement
- Passive radon system
- Stove & refrigerator
- Durable low maintenance siding
- Efficient natural gas furnace & central air conditioning
- Landscaping
- \*Reduced pricing and special financing to qualified households.

SOUTHWEST MINNESOTA

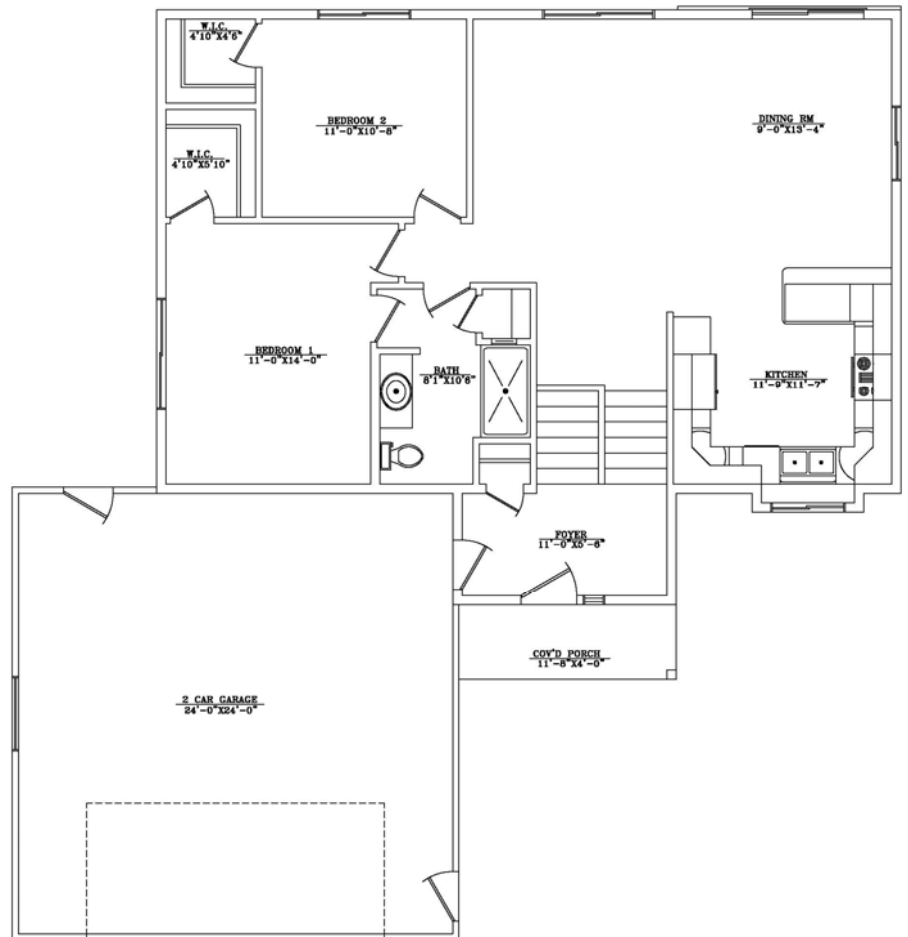
**Housing Partnership**

Contact Pam at 507.836.1623 • [pams@swmhp.org](mailto:pams@swmhp.org)



**LOWER LEVEL FLOOR**  
 1,111 SQUARE FEET

**SPLIT-LEVEL**  
**2235 Castlewood Drive**  
**Block 2, Lot 6**  
**Morning View Second Addition**



**UPPER LEVEL FLOOR PLAN**  
 1,111 SQUARE FEET