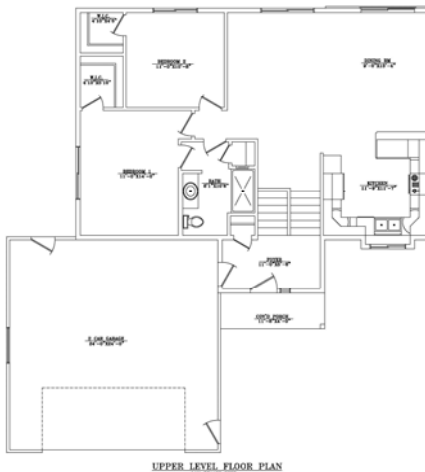


2235 Castlewood Drive, Worthington, MN



MORNING VIEW SECOND ADDITION

Block 2, Lot 6

Worthington MN
56287

Sale Price
\$201,836*

**Income Restrictions Apply*

Non-restricted Price
\$220,500

4 Bedrooms

2 Bath

2224 sq. ft.

Newly constructed split-level, 4 bedroom, 2 bath home located in Worthington's Morning View Second Addition.

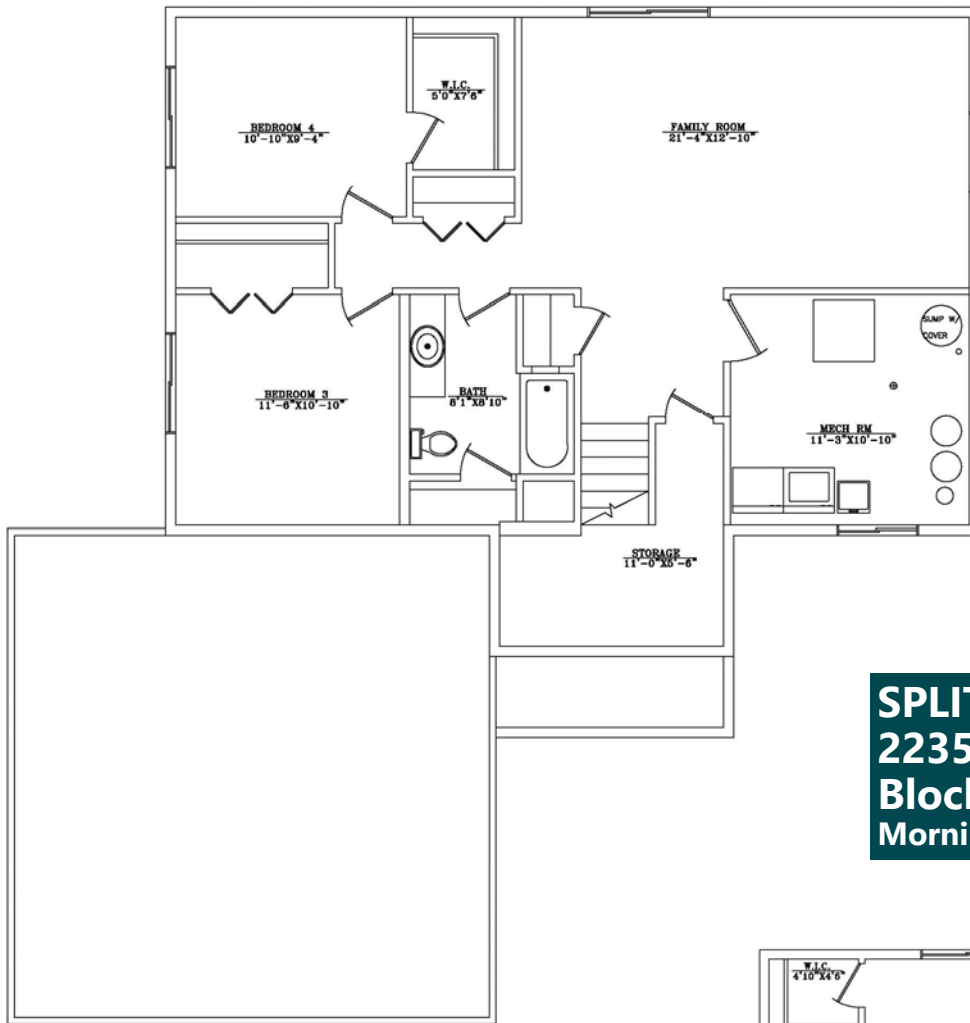
Amenities:

- 2 stall garage with opener
- Open concept with large family room
- Finished basement
- Passive radon system
- Stove & refrigerator
- Durable low maintenance siding
- Efficient natural gas furnace & central air conditioning
- Landscaping
- *Reduced pricing and special financing to qualified households.

SOUTHWEST MINNESOTA

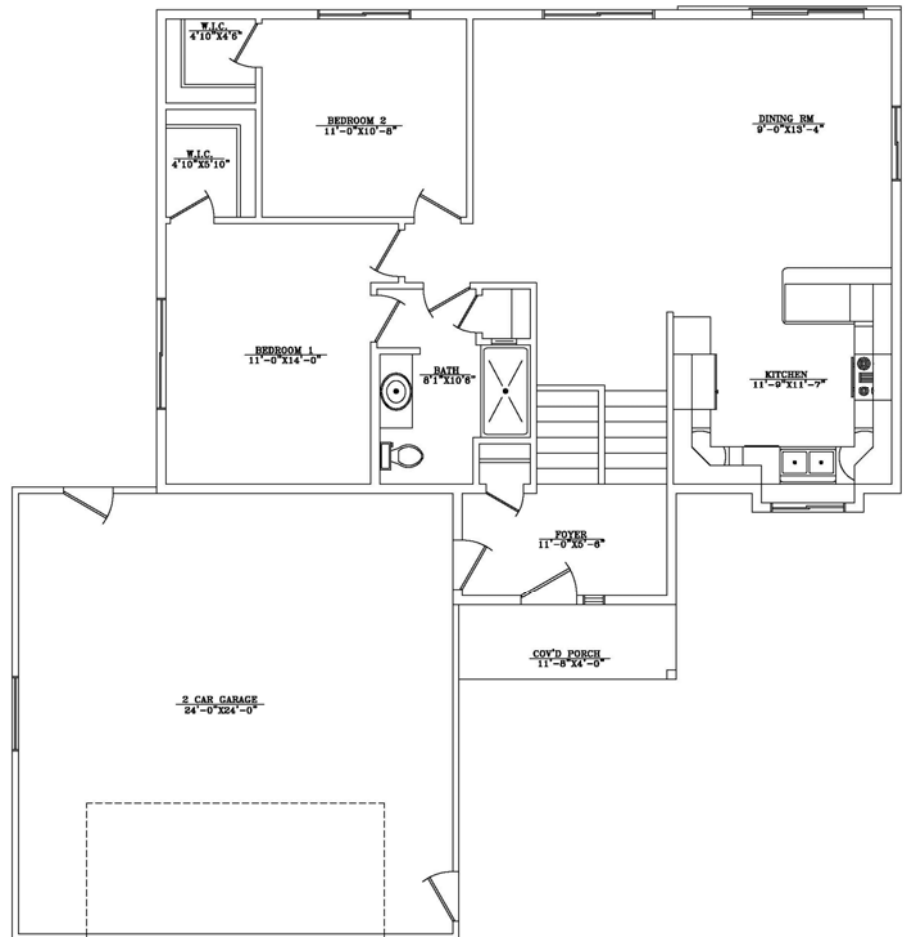
Housing Partnership

Contact Pam at 507.836.1623 • pams@swmhp.org



SPLIT-LEVEL
2235 Castlewood Drive
Block 2, Lot 6
Morning View Second Addition

LOWER LEVEL FLOOR
 1,111 SQUARE FEET



UPPER LEVEL FLOOR PLAN
 1,111 SQUARE FEET