

2234 Eleanor Street, Worthington, MN



Newly constructed split-foyer, 4 bedroom, 2 bath home located in Worthington's Morning View Second Addition.

Amenities:

- 2 stall garage with opener
- Open concept with large family room
- Finished basement
- Passive radon system
- Stove & refrigerator
- Durable low maintenance siding
- Efficient natural gas furnace & central air conditioning
- Landscaping
- *Reduced pricing and special financing to qualified households.

MORNING VIEW SECOND ADDITION

Block 2, Lot 3

Worthington MN
56287

Sale Price
\$196,499*

**Income Restrictions Apply*

Non-restricted Price
\$221,200

4 Bedrooms

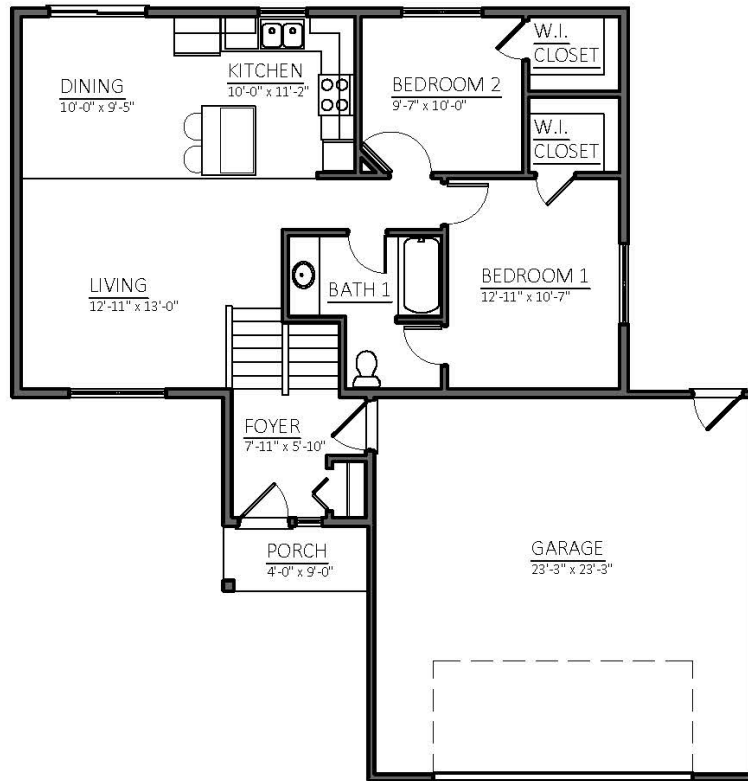
2 Bath

1974 sq. ft.

SOUTHWEST MINNESOTA

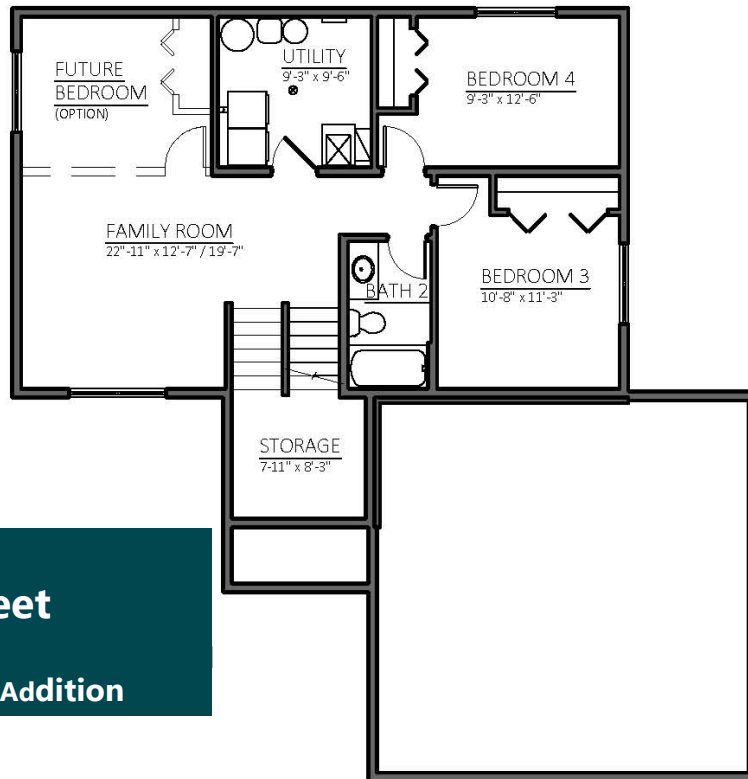
Housing Partnership

Contact Pam at 507.836.1623 • pams@swmhp.org



UPPER FLOOR PLAN

987 SQUARE FEET



LOWER FLOOR PLAN

987 SQUARE FEET

SPLIT-FOYER
2234 Eleanor Street
Block 2, Lot 3
Morning View Second Addition