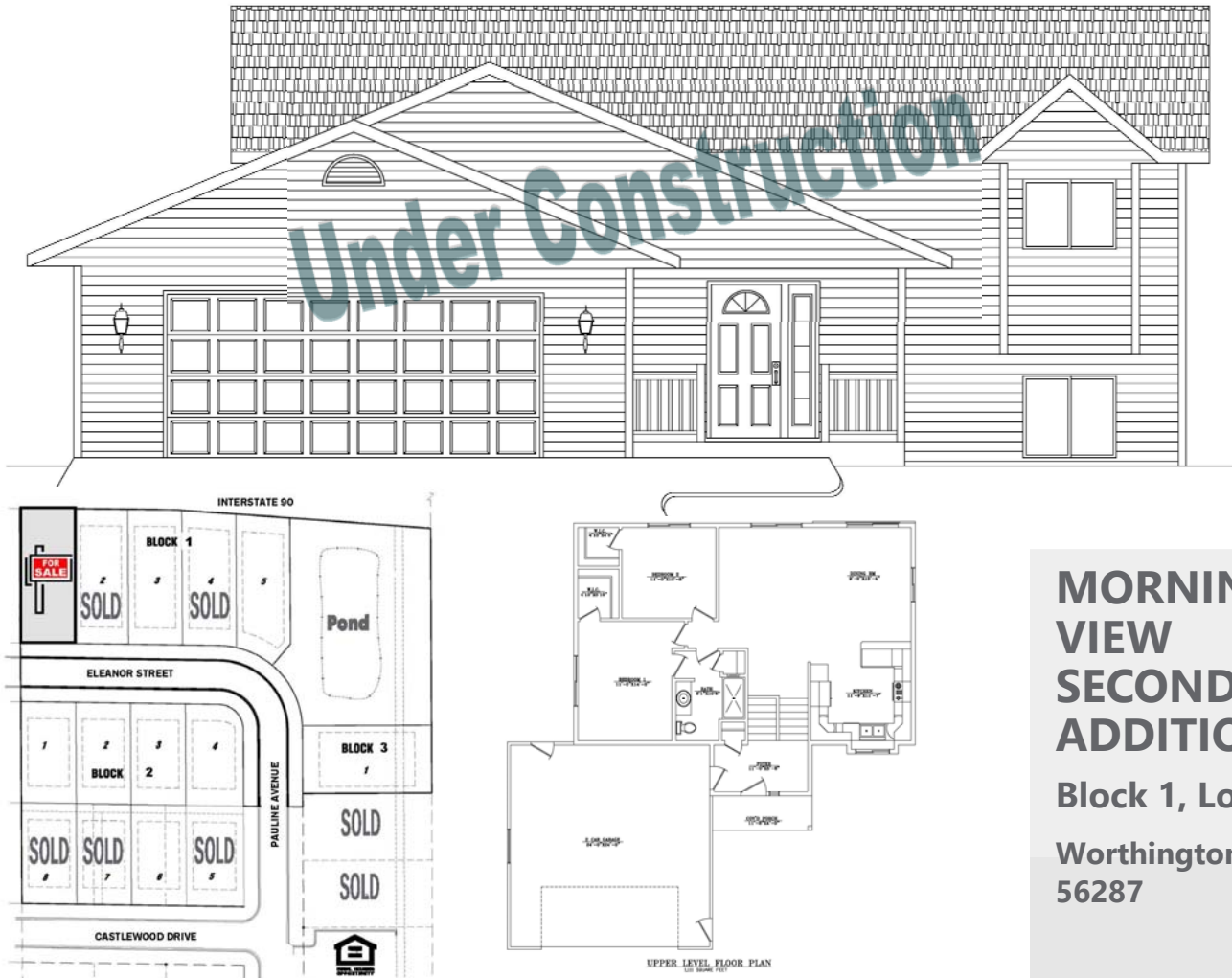


2217 Eleanor Street, Worthington, MN



Newly constructed split-level, 4 bedroom, 2 bath home located in Worthington's Morning View Second Addition.

Amenities:

- 2 stall garage with opener
- Open concept with large family room
- Finished basement
- Passive radon system
- Stove & refrigerator
- Durable low maintenance siding
- Efficient natural gas furnace & central air conditioning
- Landscaping
- *Reduced pricing and special financing to qualified households.

MORNING VIEW SECOND ADDITION

Block 1, Lot 1

Worthington MN
56287

Sale Price
\$195,799*

***Income Restrictions Apply**

Non-restricted Price
\$220,500

4 Bedrooms

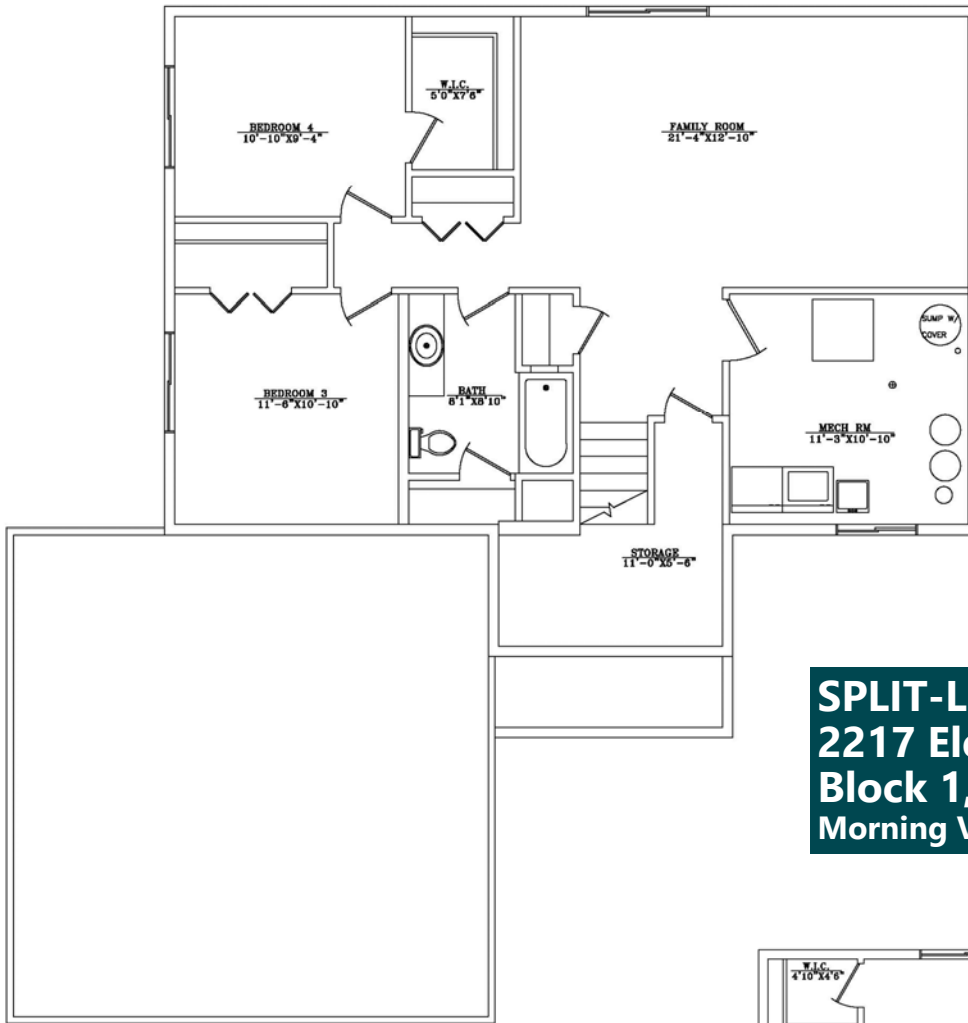
2 Bath

2224 sq. ft.

SOUTHWEST MINNESOTA

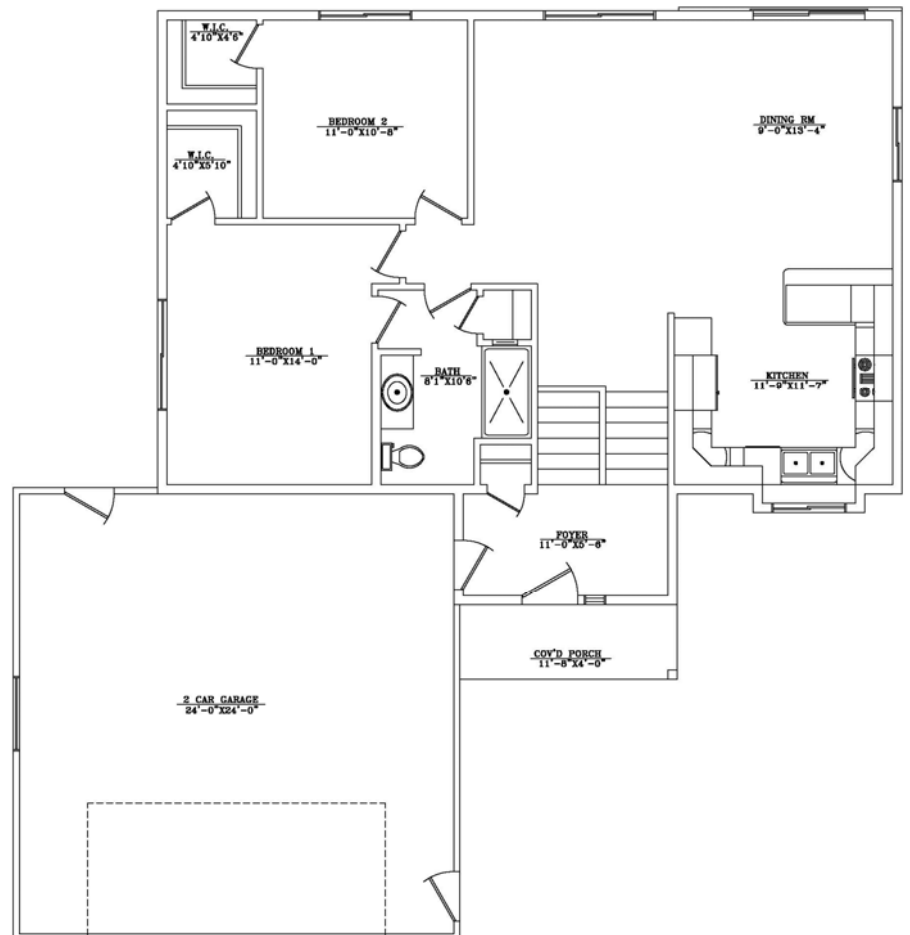
Housing Partnership

Contact Pam at 507.836.1623 • pams@swmhp.org



LOWER LEVEL FLOOR
1,111 SQUARE FEET

SPLIT-LEVEL
2217 Eleanor Street
Block 1, Lot 1
Morning View Second Addition



UPPER LEVEL FLOOR PLAN
1,111 SQUARE FEET