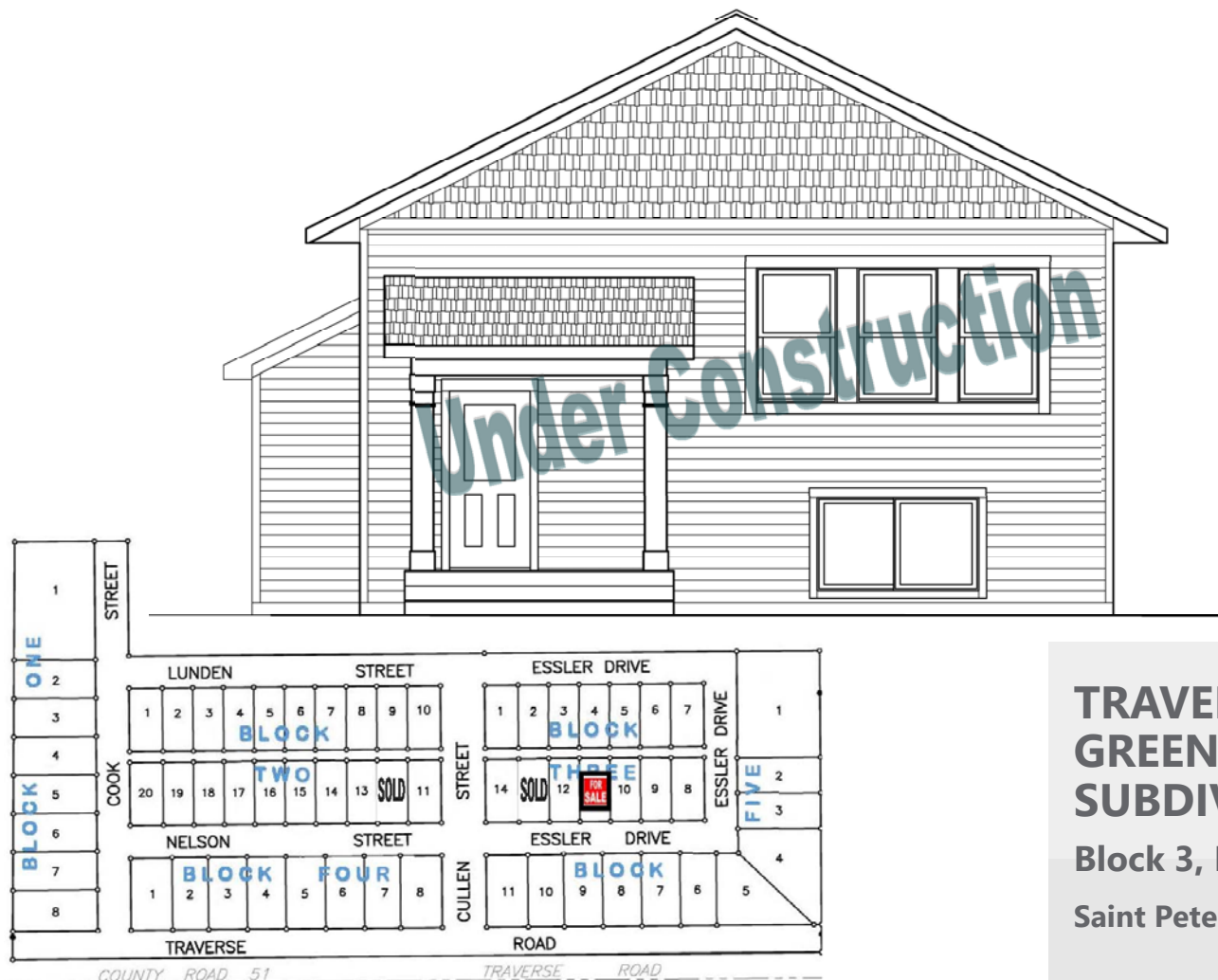


2006 Essler Drive, St. Peter, MN



Newly constructed split-level, 2 bedroom, 1 bath home located in Saint Peter's newest neighborhood, *Traverse Green*.

Features and Amenities:

- Year Built: 2017
- Finished square feet: 1,064
- Unfinished basement for future expansion
- Lot size: 6,900 square feet
- 2-stall attached garage
- Front Porch (6'-4" x 10')
- Passive radon system
- Durable low maintenance siding
- Efficient natural gas furnace & central air conditioning
- Stove & refrigerator included
- County: Nicollet
- School District: St. Peter (ISD 508)

TRAVERSE GREEN SUBDIVISION

Block 3, Lot 11

Saint Peter MN 56082

Sale Price
\$200,200*

***Income Restrictions Apply**

Non-restricted Price
\$209,700

2 Bedrooms

1 Bath

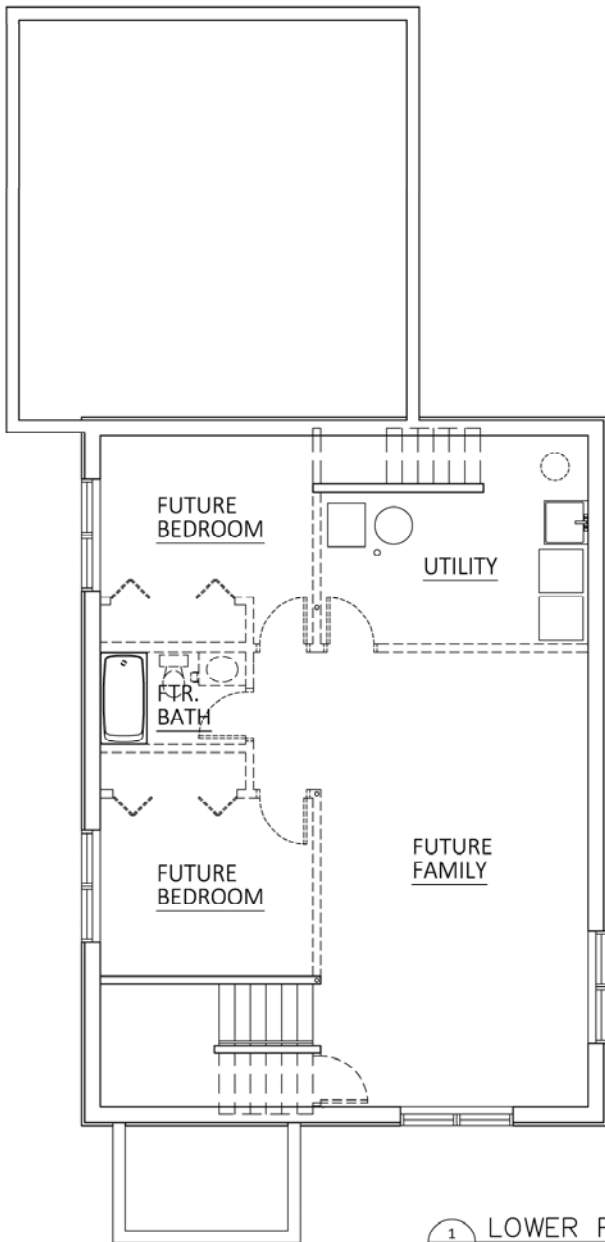
1,064 sq. ft.

SOUTHWEST MINNESOTA

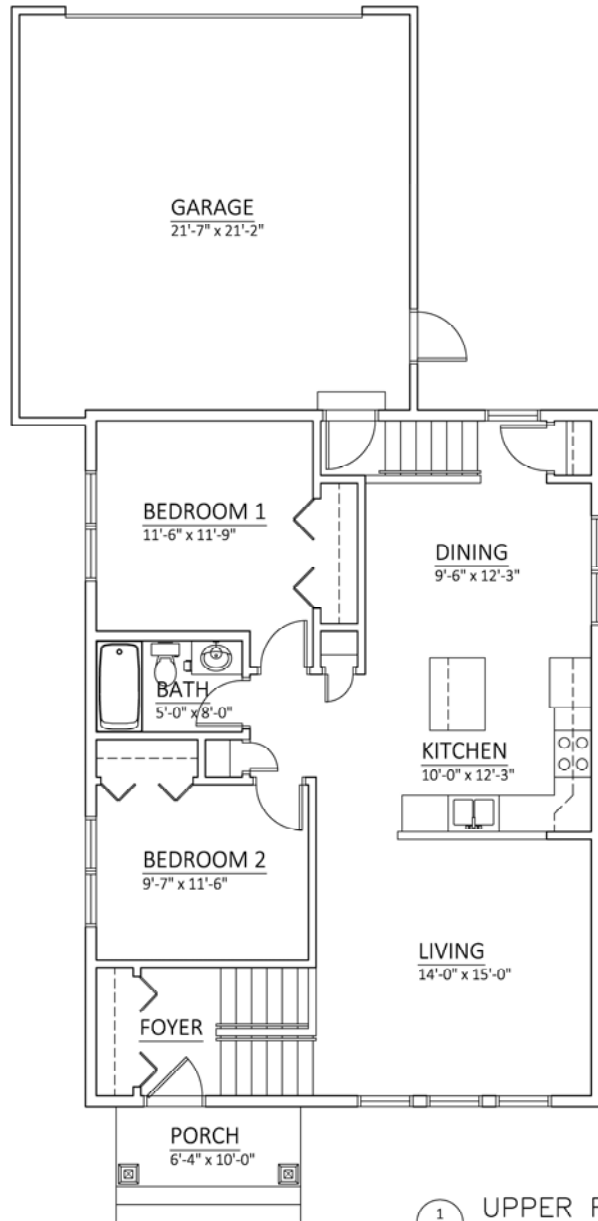
Housing Partnership

For more information, contact Pam:

P (507) 836-1623 • pams@swmhp.org



1
A1 LOWER FLOOR
1,064 SQUARE FEET



1
A2 UPPER FLOOR
1,064 SQUARE FEET

SLPIT-LEVEL
2006 Essler Drive
Block 3, Lot 11
Traverse Green Subdivision