

2000 Essler Drive, St. Peter, MN



Newly constructed rambler, 2 bedroom, 1 bath home located in Saint Peter's newest neighborhood, *Traverse Green*.

Features and Amenities:

- Year Built: 2017
- Finished square feet: 936
- Unfinished basement for future expansion
- Lot size: 6,900 square feet
- 2-stall attached garage
- Front Porch (15'-9" x 6'-11")
- Passive radon system
- Durable low maintenance siding
- Efficient natural gas furnace & central air conditioning
- Stove & refrigerator included
- County: Nicollet
- School District: St. Peter (ISD 508)

SOUTHWEST MINNESOTA

Housing Partnership

For more information, contact Pam:

P (507) 836-1623 • pams@swmhp.org

TRAVERSE GREEN SUBDIVISION

Block 3, Lot 14

Saint Peter MN 56082

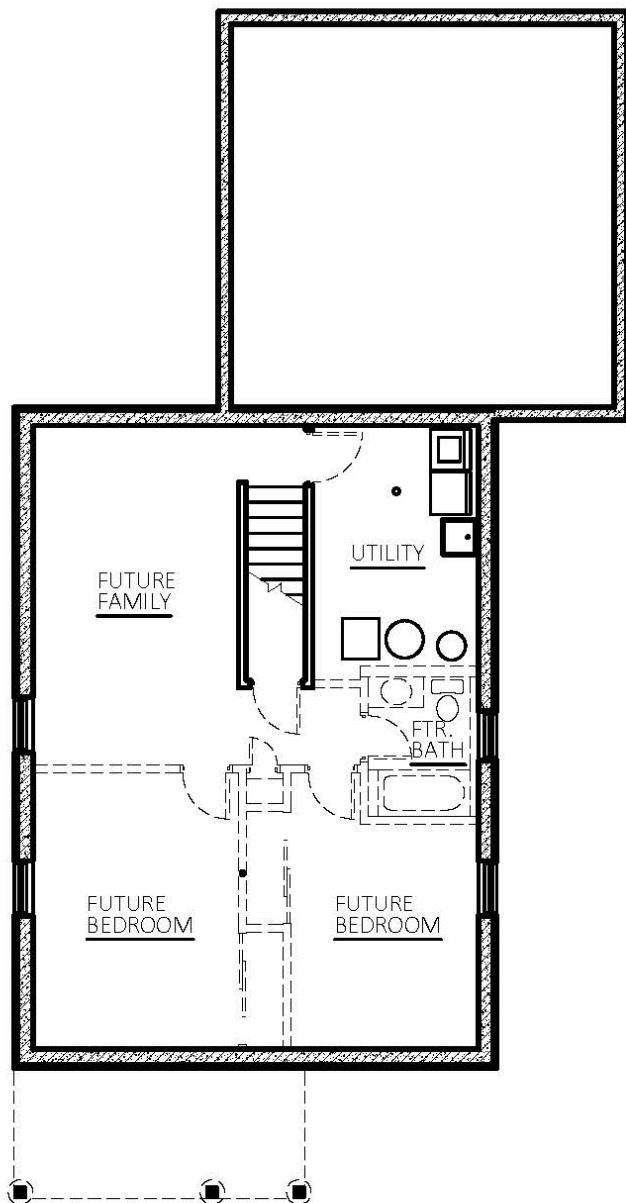
Sale Price \$194,000*

*Income Restrictions Apply

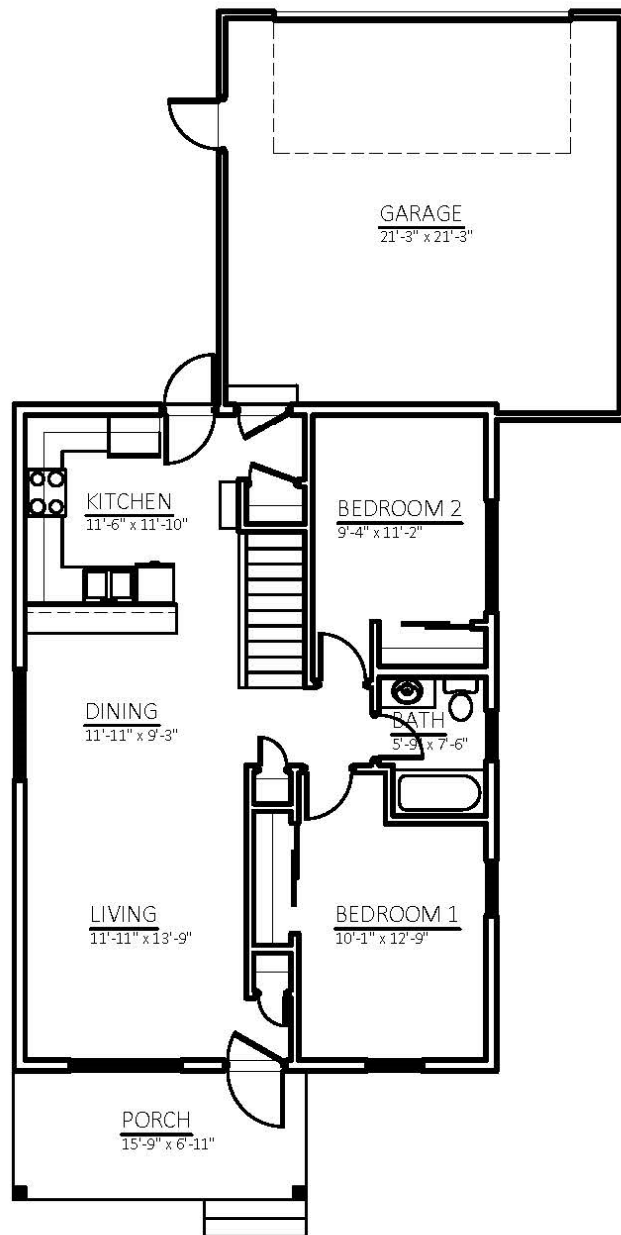
**Non-restricted Price
\$203,500**

2 Bedrooms

1 Bath



LOWER FLOOR PLAN - UNFINISHED
936 SQUARE FEET



UPPER FLOOR PLAN
936 SQUARE FEET

RAMBLER
2000 Essler Drive
Block 3, Lot 14
Traverse Green Subdivision