

2000 Essler Drive, St. Peter, MN



Newly constructed rambler, 2 bedroom, 1 bath home located in Saint Peter's newest neighborhood, *Traverse Green*.

Features and Amenities:

- Year Built: 2017
- Finished square feet: 936
- Unfinished basement for future expansion
- Lot size: 6,900 square feet
- 2-stall attached garage
- Front Porch (15'-9" x 6'-11")
- Passive radon system
- Durable low maintenance siding
- Efficient natural gas furnace & central air conditioning
- Stove & refrigerator included
- County: Nicollet
- School District: St. Peter (ISD 508)

SOUTHWEST MINNESOTA

Housing Partnership

For more information, contact Pam:

P (507) 836-1623 • pams@swmhp.org

TRAVERSE GREEN SUBDIVISION

Block 3, Lot 14

Saint Peter MN 56082

Sale Price \$194,000*

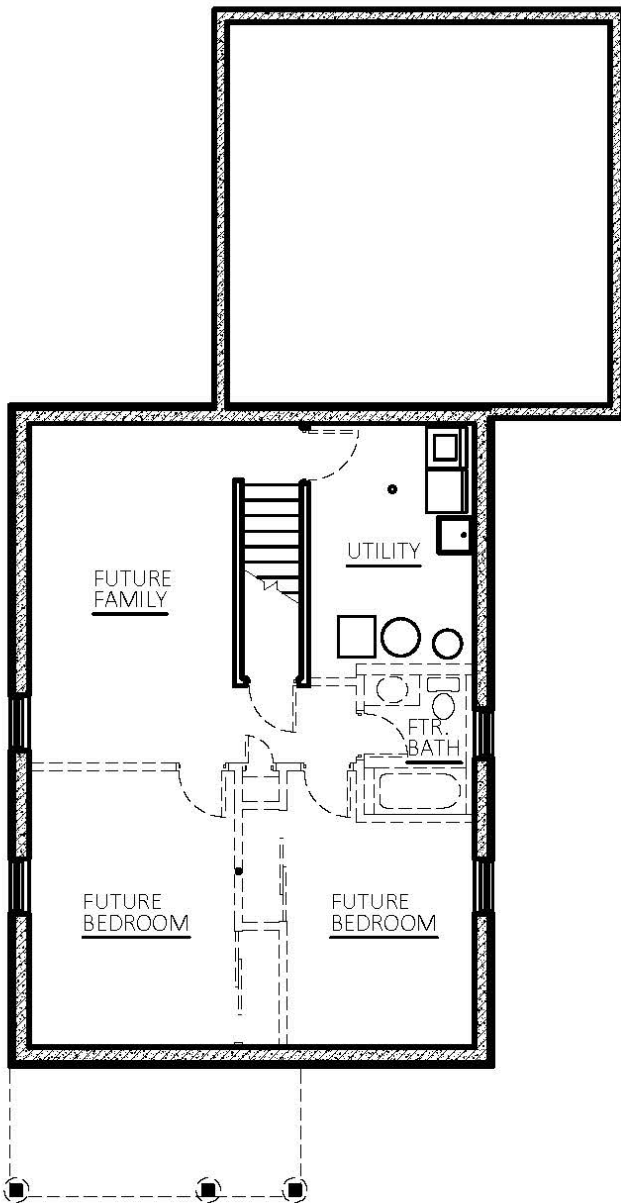
*Income Restrictions Apply

**Non-restricted Price
\$203,500**

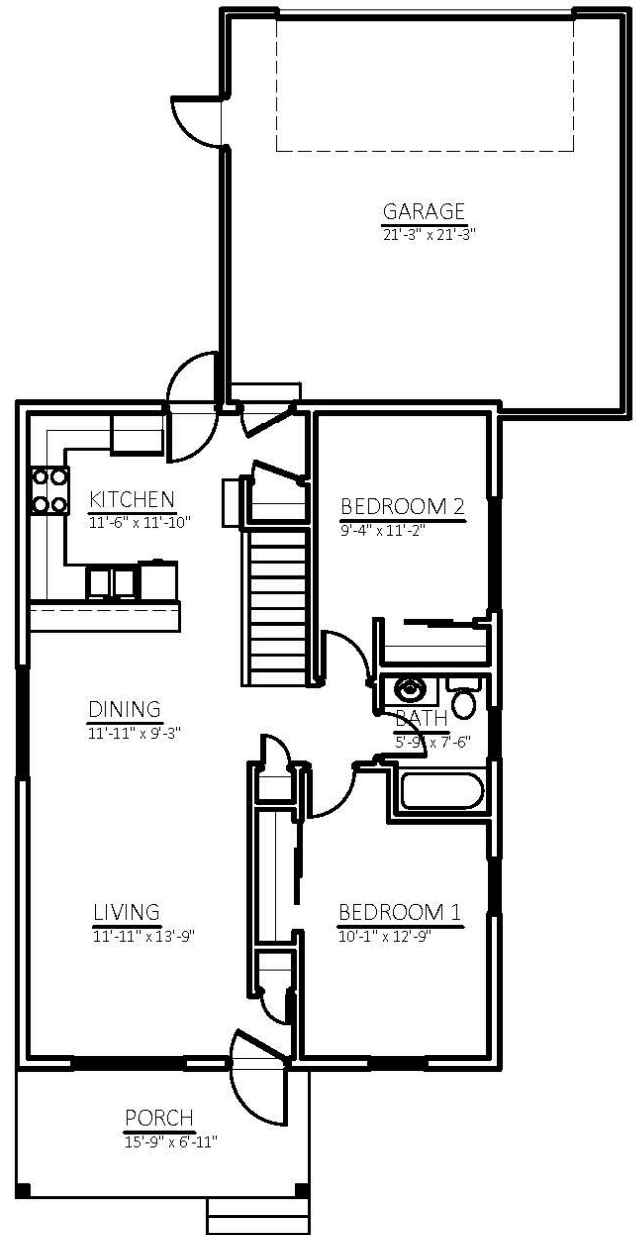
2 Bedrooms

1 Bath






 LOWER FLOOR PLAN - UNFINISHED
 936 SQUARE FEET




 UPPER FLOOR PLAN
 936 SQUARE FEET

RAMBLER
2000 Essler Drive
Block 3, Lot 14
Traverse Green Subdivision