

2251 Eleanor Street, Worthington, MN



Newly constructed split-level 2224 sq. ft. home is located in Worthington's Morning View Second Addition.

Amenities:

- 4 Bedroom
- 2 Bath
- 2 stall garage with opener
- Open concept with large family room
- Finished basement
- Passive radon system
- Stove & refrigerator
- Durable low maintenance siding
- Efficient natural gas furnace & central air conditioning
- Landscaping



MORNING VIEW SECOND ADDITION

Block 1, Lot 5

2251 Eleanor Street

Worthington MN 56287

Sale Price
\$193,799*

*Income Restrictions Apply

Non-restricted Price
\$218,500

Find out if you may be eligible!

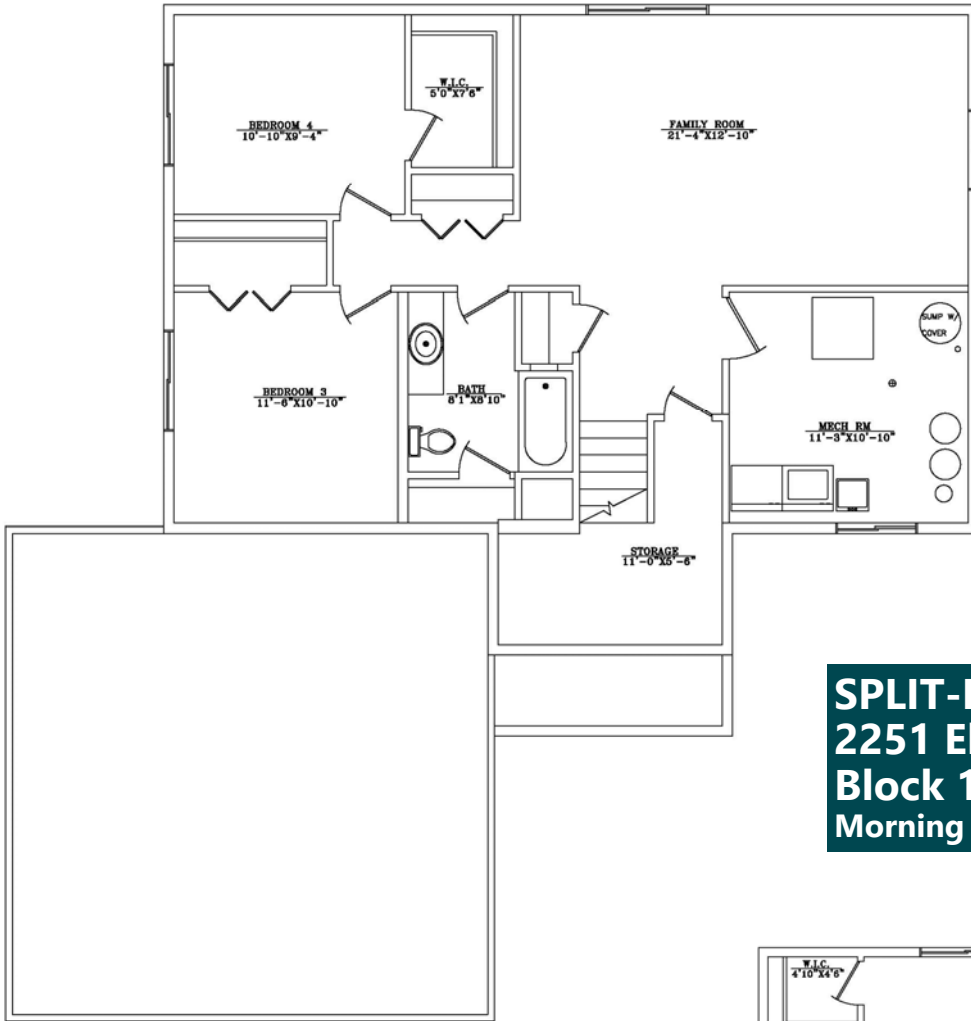
*Reduced pricing and special financing to qualified households.

SOUTHWEST MINNESOTA

Housing Partnership

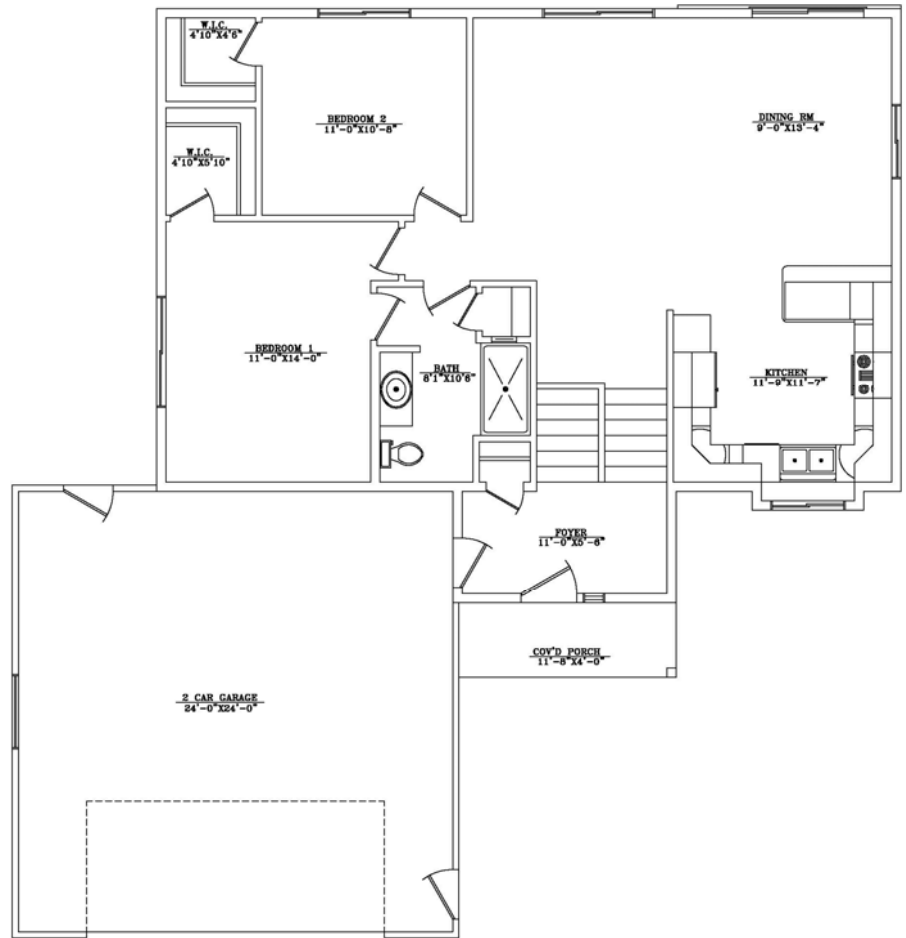
Contact Ali Joens at 507.836.1623 • alij@swmhp.org





LOWER LEVEL FLOOR
1,111 SQUARE FEET

SPLIT-LEVEL
2251 Eleanor Street
Block 1, Lot 5
Morning View Second Addition



UPPER LEVEL FLOOR PLAN
1,111 SQUARE FEET