

2234 Eleanor Street, Worthington, MN



Newly constructed 1974 sq. ft. split-foyer, 4 bedroom, 2 bath home is located in Worthington's attractive Morning View Second Addition.

Amenities:

- 2 stall garage with opener
- Open concept with large family room
- Finished basement
- Passive radon system
- Stove & refrigerator
- Durable low maintenance siding
- Efficient natural gas furnace & central air conditioning
- Landscaping

MORNING VIEW SECOND ADDITION

Block 2, Lot 3

2234 Eleanor Street

Worthington MN 56287

Sale Price
\$185,199*

***Income Restrictions
Apply**

Non-restricted Price
\$209,900

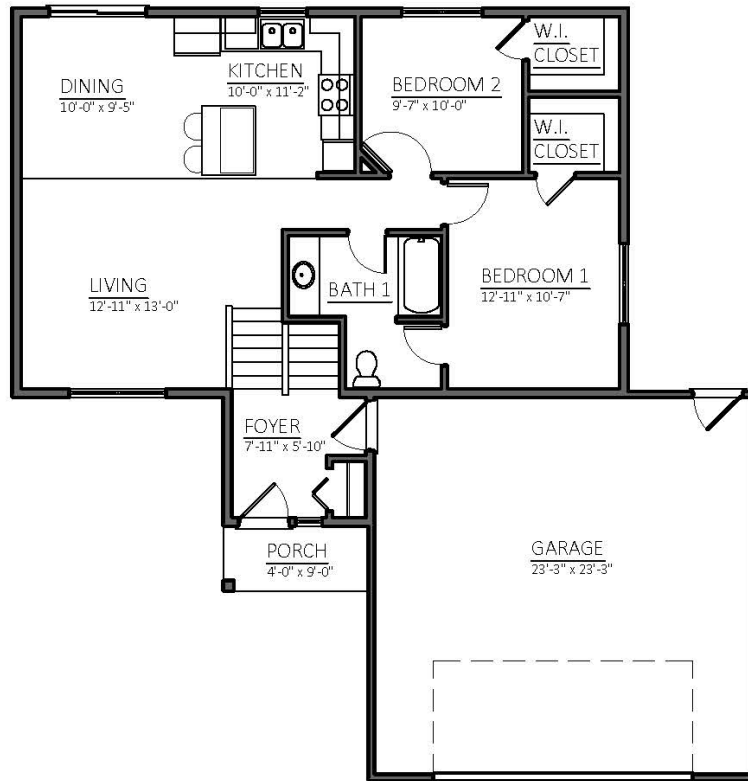
*Find out if you may be
eligible!*

SOUTHWEST MINNESOTA

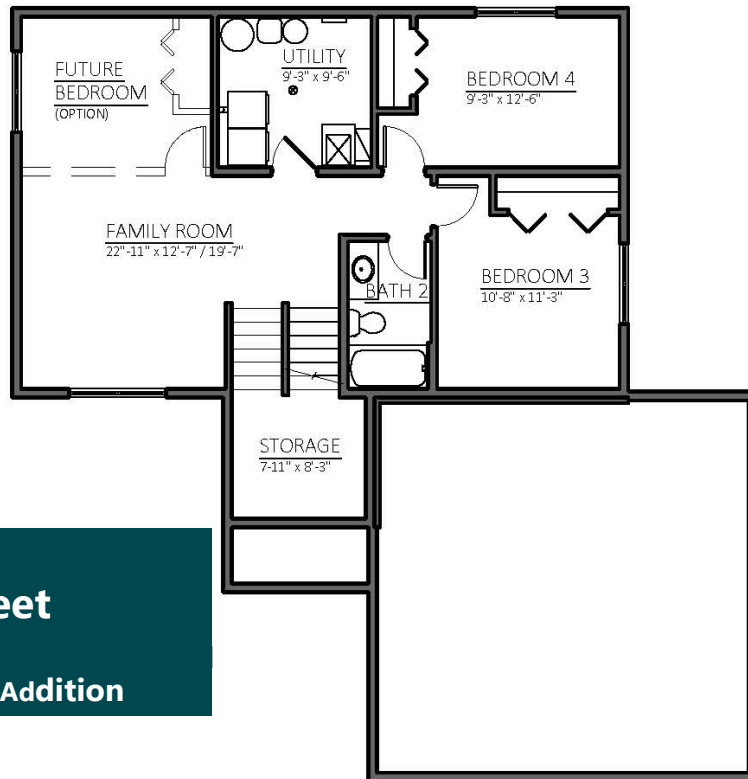
Housing Partnership

Contact Ali Joens at 507.836.1605 • alij@swmhp.org





UPPER FLOOR PLAN
987 SQUARE FEET



LOWER FLOOR PLAN
987 SQUARE FEET

SPLIT-FOYER
2234 Eleanor Street
Block 2, Lot 3
Morning View Second Addition