

# 2000 Essler Drive, St. Peter, MN



Newly constructed rambler, 2 bedroom, 1 bath home located in Saint Peter's newest neighborhood, *Traverse Green*.

#### Features and Amenities:

- Year Built: 2017
- Finished square feet: 936
- Unfinished basement for future expansion
- Lot size: 6,900 square feet
- 2-stall attached garage
- Front Porch (15'-9" x 6'-11")
- Passive radon system
- Durable low maintenance siding
- Efficient natural gas furnace & central air conditioning
- Stove & refrigerator included
- County: Nicollet
- School District: St. Peter (ISD 508)

SOUTHWEST MINNESOTA

**Housing Partnership**

Contact Ali at (507) 836-1605 • [alij@swmhp.org](mailto:alij@swmhp.org)

## TRAVERSE GREEN SUBDIVISION

Block 3, Lot 14

2000 Essler Drive

Saint Peter MN 56082

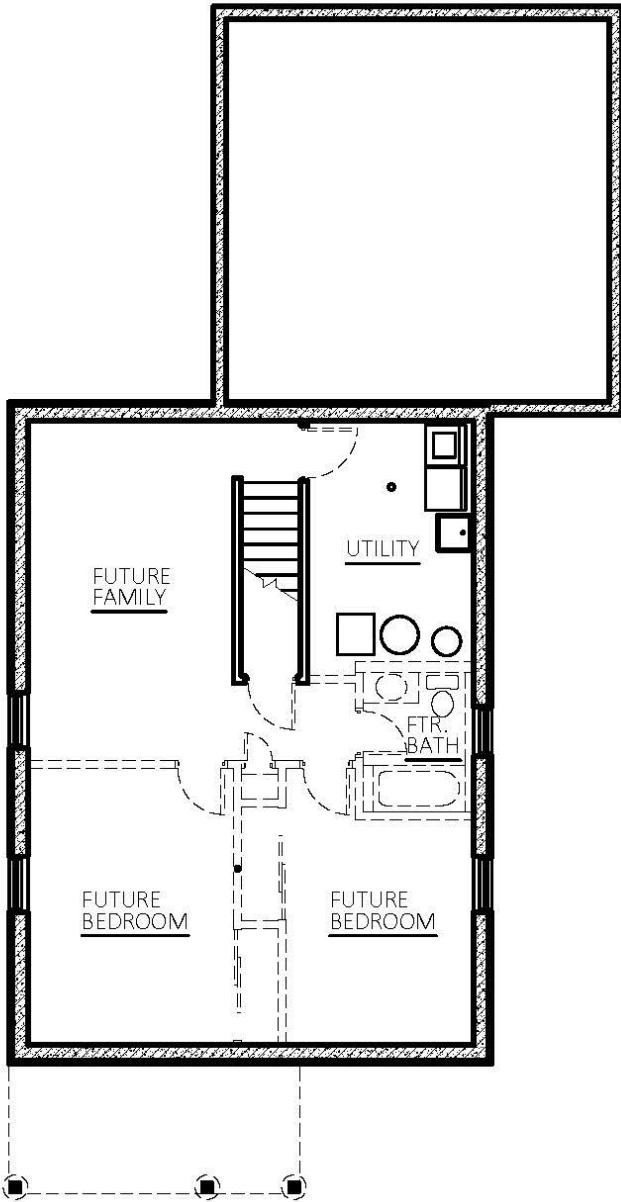
**Sale Price**  
**\$194,000\***

\*Income Restrictions Apply

**Non-restricted Price**  
**\$203,500**

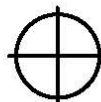
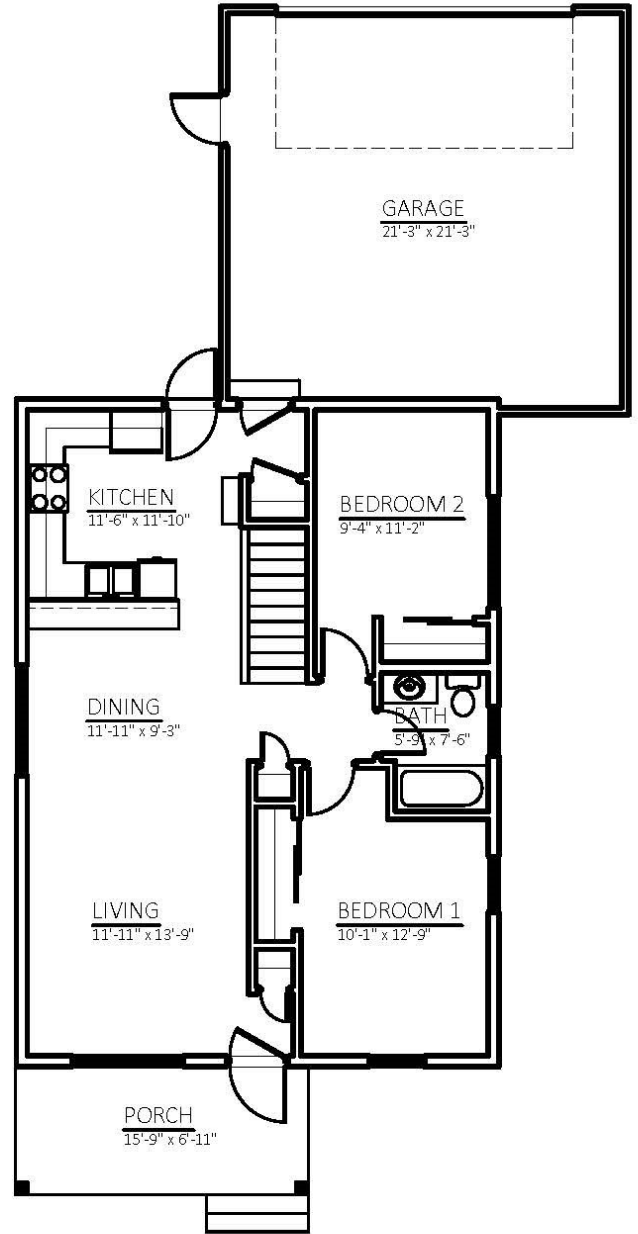
*Find out if you may be eligible!*





LOWER FLOOR PLAN - UNFINISHED

936 SQUARE FEET



UPPER FLOOR PLAN

936 SQUARE FEET

**RAMBLER**  
**2000 Essler Drive**  
**Block 3, Lot 14**  
**Traverse Green Subdivision**